



Adolescent health in the Eastern Mediterranean Region: findings from the global burden of disease 2015 study

GBD 2015 Eastern Mediterranean Region Adolescent Health Collaborators · Ali H. Mokdad¹

Received: 1 May 2017/Revised: 15 June 2017/Accepted: 21 June 2017
© The Author(s) 2017. This article is an open access publication

Abstract

Objectives The 22 countries of the East Mediterranean Region (EMR) have large populations of adolescents aged 10–24 years. These adolescents are central to assuring the health, development, and peace of this region. We described their health needs.

Methods Using data from the Global Burden of Disease Study 2015 (GBD 2015), we report the leading causes of mortality and morbidity for adolescents in the EMR from 1990 to 2015. We also report the prevalence of key health risk behaviors and determinants.

Results Communicable diseases and the health consequences of natural disasters reduced substantially between 1990 and 2015. However, these gains have largely been offset by the health impacts of war and the emergence of non-communicable diseases (including mental health disorders), unintentional injury, and self-harm. Tobacco smoking and high body mass were common health risks amongst adolescents. Additionally, many EMR countries had high rates of adolescent pregnancy and unmet need for contraception.

Conclusions Even with the return of peace and security, adolescents will have a persisting poor health profile that will pose a barrier to socioeconomic growth and development of the EMR.

Keywords Adolescent health · Burden of disease · Eastern Mediterranean Region

Introduction

The World Health Organization's Eastern Mediterranean Region (EMR) is an administrative region of 22 countries (Table 1) that while rich in natural resources, has marked country-level variation in socioeconomic wealth (ranging from \$US 549.3 per capita in Somalia to \$US 73,653.4 per capita in Qatar), health system capacities and health coverage (Blair et al. 2014; Mandil et al. 2013; WHO 2017b). Many countries in the EMR have recently experienced social and political instabilities, civil unrest, war, and mass displacement of people (Mokdad et al. 2016a). As a result, health in many EMR countries has failed to improve in recent years (Mokdad et al. 2016a, 2014). As other papers in this series highlight, there is now an increasing burden of many preventable health problems including HIV, mental health disorders, and intentional injury (GBD 2015 Eastern Mediterranean Region HIV/AIDS Collaborators and Mokdad 2017; GBD 2015 Eastern Mediterranean Region Intentional Injuries Collaborators and Mokdad 2017; GBD 2015 Eastern Mediterranean Region Mental Health Collaborators and Mokdad 2017). There is a risk that without urgent action, the health status of this region will only deteriorate further, with both regional and global consequences for health, social stability, and economic development.

Corresponding author: Ali H. Mokdad.

This article is part of the supplement “The state of health in the Eastern Mediterranean Region, 1990–2015”.

GBD 2015 Eastern Mediterranean Region Adolescent Health Collaborators are listed at the end of the article.

Electronic supplementary material The online version of this article (doi:10.1007/s00038-017-1003-4) contains supplementary material, which is available to authorized users.

✉ Ali H. Mokdad
mokdaa@uw.edu

¹ Institute for Health Metrics and Evaluation, University of Washington, Seattle, WA, USA

Table 1 Eastern Mediterranean region: Countries, adolescent population and socioeconomic development, 1990–2015 (World Bank, Global Burden of Disease Study 2015, Eastern Mediterranean Countries, 1990–2015)

Country	Proportion of country population aged 10–24 year in % (<i>n</i> , number of adolescents in each country)	Proportion of the EMR adolescent population (%)	GDP per capita (\$US)	Socio-demographic index (SDI)		
				1990	2015	SDI level
Afghanistan	34.8% (11,356,556)	6.2	594.3	0.1440	0.2888	Low
Bahrain	21.7% (296,971)	0.2	22,600.2	0.5969	0.7764	High-middle
Djibouti	30.5% (271,064)	0.1	1945.1	0.3228	0.4615	Low-middle
Egypt	26.9% (24,492,800)	13.3	3614.7	0.4409	0.6191	Middle
Iran	22.8% (17,992,150)	9.8	–	0.4600	0.7154	High-middle
Iraq	31.2% (11,348,292)	6.2	4943.8	0.3997	0.5756	Middle
Jordan	29.9% (2,263,213)	1.2	4940.0	0.4967	0.6949	High-middle
Kuwait	19.1% (745,077)	0.4	29,300.6	0.6911	0.8624	High
Lebanon	28.5% (1,643,663)	0.9	8047.6	0.5698	0.7547	High-middle
Libya	25.0% (1,574,514)	0.9	–	0.4747	0.6430	Middle
Morocco	26.0% (8,932,361)	4.8	2878.2	0.3347	0.4959	Low-middle
Oman	21.4% (960,174)	0.5	15,550.7	0.4089	0.7301	High-middle
Pakistan	30.2% (57,088,761)	31	1434.7	0.2786	0.4676	Low-middle
Palestine	33.6% (1,569,806)	0.9	–	0.4229	0.5670	Middle
Qatar	19.3% (429,261)	0.2	73,653.4	0.6162	0.8045	High-middle
Saudi Arabia	24.4% (7,683,094)	4.2	20,481.7	0.5245	0.7593	High-middle
Somalia	32.7% (3,545,571)	1.9	549.3	0.1158	0.1506	Low
Sudan	32.1% (12,950,382)	7.0	2414.7	0.2667	0.4282	Low-middle
Syria	32.4% (6,032,616)	3.3	–	0.3881	0.5790	Middle
Tunisia	22.6% (2,546,994)	1.4	3872.5	0.4503	0.6515	Middle
United Arab Emirates	16.6% (1,516,072)	0.8	40,438.8	0.6324	0.8747	High
Yemen	34.2% (9,191,689)	5.0	1406.3	0.1329	0.4080	Low-middle
Total	28.4% (184,431,081)	100	–	–	–	–

This table details the 22 countries in the East Mediterranean region. It provides the population of adolescents and contribution of each country to the total adolescent population in the Eastern Mediterranean Region. It also provides the overall country-level GDP in 2015 and SDI in 1990 and 2015. Dashes indicate data are unavailable

Adolescence is increasingly understood as a key developmental stage for assuring health across the course of one's life, and as such, provides significant opportunities to improve population health in the EMR (Patton et al. 2016; The World Bank 2006). Firstly, adolescents represent more than a quarter of the population in the EMR, and their health needs are likely to be distinct from children and adults. Conflict and civil unrest (which have been a feature of many countries in the EMR) have a large impact on the health of young people, both acutely (through high rates of mortality and morbidity due to violence) but also in the longer term (including mental health disorder and poor sexual and reproductive health) (Viner et al. 2012). Secondly, many health risks typically emerge during adolescence including those for non-communicable diseases (NCDs) such as substance use, overweight, and physical inactivity. Given that NCDs are now the leading cause of poor health in the EMR, there is a potential to intervene before harms arise (Mokdad et al. 2016b). Thirdly, adolescents are critical to driving socioeconomic development

(The World Bank 2006). Poor physical health and mental health are barriers to participation in education and employment, as are policies and systems that do not enable equitable access. Finally, in their role as current and future parents, the health of adolescents has significant implications for the next generation (Patton et al. 2016).

To date, the health problems and health risks of adolescents in the EMR have been inadequately described (Alaovie et al. 2017). This is a significant barrier to developing comprehensive policies that address adolescent health and to measuring the impact of any investments made. This paper aims to report the health profile for adolescents living in the EMR.

Methods

We framed our study around the conceptual framework defined by the Lancet Commission of Adolescent Health and Wellbeing (hereafter referred to as the Commission)

(Patton et al. 2016). Health needs included: health outcomes (mortality, non-fatal diseases, and injuries); health risks (behaviors and states that carry risk for poor health in and beyond adolescence); and determinants of health (such as education and employment). Adolescence was defined as 10–24 years, as these years encompass the important biological, neurocognitive, and social role transitions that typically define adolescence (Mokdad et al. 2016b; Patton et al. 2016; Sawyer et al. 2012). Where possible, we report age-disaggregated data for young adolescents (10–14 years), older adolescents (15–19 years), and young adults (20–24 years) (Patton et al. 2016).

Data are drawn from the Global Burden of Disease Study 2015 (GBD 2015) as this provides a complete set of comparable health estimates for 195 countries, including all those in the EMR. Methods are described in detail elsewhere (GBD DALYs Hale Collaborators 2016; GBD Disease Injury Incidence and Prevalence Collaborators 2016; GBD Mortality and Causes of Death Collaborators 2016; GBD SDG Collaborators 2016), but briefly, GBD 2015 includes a comprehensive and systematic analysis of 249 causes of death, 310 causes of disease and injury, and 79 behavioral and environmental health risks. GBD 2015 has four levels of causes that are mutually exclusive. Level one has three causes: type I conditions (communicable, maternal, neonatal, and nutritional disorders); non-communicable diseases; and injuries. Level two has 21 causes, while levels three and four consist of all disaggregated causes. For this analysis we report causes at level four. GBD is based on the best available primary data and employs a series of disease models to harmonize health estimates and fill data gaps. Each step of the estimation process of GBD 2015 has been documented, as well as data sources, in accordance with Guidelines for Accurate and Transparent Health Estimates Reporting (GATHER). For this analysis, we accessed data in 5-year age bands, for males and females, from 1990 to 2015 in 5-year time slices.

Mortality is reported as all-cause and cause-specific rates per 100,000 (GBD Mortality and Causes of Death Collaborators 2016). Non-fatal diseases and injuries are reported as years lived with disability (YLDs), a metric which incorporates prevalence of disease, duration, and its severity (using disease weights) (GBD Disease Injury Incidence and Prevalence Collaborators 2016). As a summary measure of population health, we also report disability-adjusted life-years (DALYs), the sum of years of healthy life lost due to premature mortality (YLLs), and years of life lived with disability (YLDs) (GBD DALYs Hale Collaborators 2016). For these estimates, we report 95% uncertainty estimates, which are distinct from confidence intervals in that they represent uncertainty derived from sampling, model estimation, and model specification (GBD DALYs Hale Collaborators 2016).

In addition to region-level estimates, we also report country-specific DALY estimates and the prevalence of three key health risks and four determinants (aligned with the conceptual framework from the Commission and data availability) to help prioritize country-specific actions (Patton et al. 2016). Data for health risks were sourced from GBD 2015. Tobacco smoking was defined as current daily smoked tobacco use (GBD Tobacco Collaborators 2017). Overweight was defined using the International Obesity Task Force age and gender specific cut-offs, equivalent to BMI ≥ 25 kg/m² at age 18 (Cole and Lobstein 2012). This definition includes those who are obese. Binge drinking was defined as having consumed 60 grams of alcohol on a single occasion for males and 48 grams of alcohol on a single occasion for females in the last 12 months. With respect to determinants, adolescent fertility rate (live births per 1000 15- to 19-year-old females) and mean years of educational attainment for 15- to 24-year olds were sourced from GBD 2015 (GBD SDG Collaborators 2016). Unmet need for contraception (15- to 24-year-old females currently married or in union and not wanting to become pregnant within the next two years, who report not using any method of contraception) was sourced from a review DHS and MICS surveys available in the EMR (data were collected from 2009 to 2014) (Patton et al. 2016). Youth unemployment data, defined as the percentage of 15- to 24-year olds without work but available for and seeking employment, were obtained from the International Labor Organization modeled estimates for 2013 (Patton et al. 2016).

We reported observed estimates for the region. We additionally report *expected* DALYs for each country based on the level of socioeconomic development. Expected DALYs were estimated using the Socio-demographic Index (SDI) which is based on income per capita, average educational attainment for ages 15 or older, and the total fertility rate (GBD SDG Collaborators 2016). SDI is reported as a continuous variable from 0 (lowest) to 1 (highest), and as quintiles, as shown in Table 1. GBD 2015 has estimated the relationship between SDI and each cause of DALYs using spline regressions, with these regressions then used to estimate expected DALYs at each level of SDI (GBD DALYs Hale Collaborators 2016).

Results

Mortality

All-cause mortality rates for adolescents in the EMR ranged from 63.3 per 100,000 for females aged 10–14 years to 253.2 per 100,000 for males aged 20–24 years in 2015 (e-Figure 1, panel A). Males had a higher overall mortality

rate than females. The risk of mortality for males aged 15–24 years had increased over recent years compared to what was otherwise an overall trend of reduction in mortality. Table 2 details the leading causes of mortality by sex. The most striking transition in mortality cause over time was the reduction in deaths due to natural disaster and communicable diseases, and the emergence of mortality due to injuries (especially in the context of war) and NCDs. In 1990 and 2005 natural disaster ranked as a leading cause of mortality for adolescents, whereas in 2015 it was no longer a leading cause of death for adolescents. In 2015, war and legal interventions (law enforcement) was the leading cause of death for adolescents of both sexes, representing 27.7% (14.2–38.4) of deaths amongst male 20- to 24-year olds and 7.2% (3.1–10.9) amongst female 20- to 24-year olds. For males, injuries (unintentional injuries, self-harm and violence) were the predominant causes of mortality across adolescence, and communicable diseases an important cause for 10- to 14-year olds. The leading cause of mortality for females included injuries; however, communicable and maternal conditions were also leading causes, with NCDs emerging as an important cause amongst older female adolescents.

YLDs

All-cause YLD rates are similar for males and females in the region, and have seen little improvement since 1990 (e-Figure 1 panel B). The leading causes of YLDs are detailed in Table 3. While the burden of some communicable, maternal, and nutritional disorders has declined, this has largely been offset by an increase in disability due to injury among males and lack of reduction in YLDs from non-communicable disease. From 1990 to 2015, iron deficiency anemia was the leading cause of disability for females aged 10–14 and 15–19 years, and for males aged 10–14 years. NCDs, particularly mental health disorders, migraine, asthma, skin conditions, and musculoskeletal disorders, were major contributors to YLDs for both sexes in 2015. Major depression emerged as the leading cause of morbidity amongst males aged 15–19 (7.0%, uncertainty 4.6–9.9) and 20–24 years (8.0%, uncertainty 5.1–11.7) and for females aged 20–24 years (9.1%, uncertainty 6.2–12.4) in 2015. Among older males, opioid use disorders and war were also important causes of disability.

DALYs

All-cause DALY rates have declined for females of all ages and 10- to 14-year-old males in the region (e-Figure 1, panel c), largely due to a reduction of communicable, maternal, and nutritional diseases. DALY rates have increased for males aged 15–19 and 20–24 since 1990,

largely due to an increased burden of injury. The leading causes of DALYs by age and sex are provided in Table 4. For females, type 1 conditions (nutritional disorders, communicable disease, and maternal disorders) remain important causes of DALYs. However, non-communicable diseases (mental health disorders, migraine, skin conditions, and musculoskeletal disorders) account for more than half of the total disease burden. For males, injuries due to conflict, transport, and other unintentional injuries are the leading causes of DALYs, particularly amongst 15- to 24-year olds.

There was considerable variation in all-cause and cause-specific DALY rates across countries in the region (e-Figure 2, panels A–C). In all countries in the region, DALY rates are highest among males, and higher among 20- to 24-year olds than other ages in males and females. The highest DALY rates were in countries most affected by recent conflict or insecurity and/or those with the lowest SDI, such as Pakistan (17,483 per 100,000 10–24 years in 2015), Somalia (27,716 DALYs per 100,000 10- to 24-year olds in 2015), Afghanistan (32,068 per 100,000 10- to 24-year olds in 2015) and Syria (33,452 per 100,000 10- to 24-year olds in 2015), with 10- to 24-year olds globally having a DALY rate of 14,557 per 100,000 in 2015. In these countries, injury, particularly due to war and legal intervention was a major contributor to DALYs, particularly amongst males. For example, in Syria over 70% of DALYs to 10–24 year olds were due to injury, with males aged 20–24 experiencing the largest burden. A number of these countries also experience a high burden of nutritional disorders and communicable disease among younger adolescents, in addition to a substantial burden of maternal health problems. Countries with a higher SDI and those less affected by conflict experienced a lower burden of poor health. In these settings DALYs were mostly due to NCDs including mental health disorders, skin conditions, asthma, migraine, and musculoskeletal disorders.

The three countries that had the largest populations of adolescents in the EMR (Pakistan, Iran, and Egypt) had very different disease burdens. Egypt (12,418 DALYs per 100,000 10- to 24-year olds in 2015) and Iran (12,624 DALYs per 100,000 10- to 24-year olds in 2015) has similar low rates of DALYs; however, Iran had a higher burden due to injury (3361 per 100,000 in Iran compared to 1938 per 100,000 in Egypt). Pakistan had a high burden of injury (3367 per 100,000) but more so type I conditions (5252 per 100,000).

e-Figure 2, panels D–F shows the expected DALYs in each country based on the SDI. The most striking finding is that with the reduction of DALYs due to war (which is not expected based on development), there remains a very large burden of poor health for adolescents in the EMR.

Table 2 Leading contributors to poor health (mortality) for adolescents in the Eastern Mediterranean Region, in 1990, 2005, 2015

		2015			2005			1990		
		Proportion	Cause	Proportion	Cause	Proportion	Cause	Proportion	Cause	Proportion
Top ten causes of mortality in females and males										
Females										
10–14 years	1	8.0% (3.2–12.6)	Natural disaster	12.8% (7.4–18)	Natural disaster	9.5% (4.2–14.2)	War and legal intervention	5.6% (3.6–7.3)	Lower respiratory infect.	5.2% (2.9–8.7)
	2	5.8% (4.1–7.8)	Typhoid fever	5.3% (2.9–8.9)	Typhoid fever	5.6% (3.6–7.3)	Lower respiratory infect.	5.2% (2.9–8.7)	Typhoid fever	4.8% (3.3–6.5)
	3	5.7% (3.5–7.4)	Lower respiratory infect.	4.7% (3.2–6.1)	Lower respiratory infect.	4.3% (2.7–5.9)	Congenital heart	4.0% (2.3–6)	Congenital heart	4.3% (2.7–5.9)
	4	5.3% (1.5–12.7)	Diarrheal diseases	4.6% (3.2–6.7)	Diarrheal diseases	4.0% (2.3–6)	Drowning	3.9% (2.6–5.9)	Drowning	4.3% (2.7–5.9)
	5	4.5% (2.2–6.7)	Tuberculosis	4.4% (2.5–6.4)	Tuberculosis	4.0% (2.3–6)	Tuberculosis	3.9% (2.6–5.9)	Tuberculosis	4.0% (2.3–6)
	6	4.3% (2.5–6.4)	Drowning	4.1% (2.6–5.8)	Drowning	3.6% (2.9–4.5)	Diarrheal diseases	3.9% (2.6–5.9)	Diarrheal diseases	4.0% (2.3–6)
	7	4.3% (2.3–7.5)	Congenital heart	3.9% (2.6–5.8)	Congenital heart	3.6% (2.9–4.5)	Motor vehicle road inj.	3.6% (2.9–4.5)	Motor vehicle road inj.	3.6% (2.9–4.5)
	8	3.2% (2.4–4.2)	Motor vehicle road inj.	3.5% (2.8–4.2)	Motor vehicle road inj.	3.6% (2.9–4.5)	Other unintentional	2.7% (1.7–4.1)	Other unintentional	2.7% (1.7–4.1)
	9	3.1% (2.5–3.9)	Malaria	2.8% (0.9–7.2)	Malaria	2.7% (1.7–4.1)	Malaria	2.6% (0.7–7.6)	Malaria	2.6% (0.7–7.6)
	10	3.1% (2–5.2)	Measles	2.4% (0.6–6.7)	Measles	2.6% (0.7–7.6)	Malaria	2.6% (0.7–7.6)	Malaria	2.6% (0.7–7.6)
15–19 years	1	5.8% (2.2–9.3)	Natural disaster	8.1% (4.4–11.5)	Natural disaster	10.1% (4.4–15.5)	War and legal intervention	4.7% (2.8–6.7)	War and legal intervention	10.1% (4.4–15.5)
	2	5.8% (3.3–8.7)	Maternal hemorrhage	5.4% (3.7–7.2)	Maternal hemorrhage	4.7% (2.8–6.7)	Tuberculosis	3.8% (2.3–5.6)	Tuberculosis	4.7% (2.8–6.7)
	3	5.5% (3.8–7.7)	Tuberculosis	5.2% (3.2–7.2)	Tuberculosis	3.8% (2.3–5.6)	Maternal hemorrhage	3.5% (2.8–4.4)	Maternal hemorrhage	3.8% (2.3–5.6)
	4	4.2% (3–5.7)	Maternal hypertension	3.6% (2.4–5)	Maternal hypertension	3.5% (2.8–4.4)	Motor vehicle road inj.	3.4% (2–5.3)	Motor vehicle road inj.	3.5% (2.8–4.4)
	5	3.8% (2.4–5.7)	Motor vehicle road inj.	3.6% (2.9–4.4)	Motor vehicle road inj.	3.4% (2–5.3)	Maternal hypertension	3.4% (2–5.3)	Maternal hypertension	3.4% (2–5.3)
	6	3.4% (2–5.2)	Diarrheal diseases	3.5% (2.4–4.9)	Diarrheal diseases	3.4% (2–4.8)	Drowning	3.4% (2–4.8)	Drowning	3.4% (2–4.8)
	7	3.0% (2.5–3.6)	Drowning	3.4% (2–4.7)	Drowning	3.3% (1.5–6.3)	Malaria	3.3% (1.5–6.3)	Malaria	3.3% (1.5–6.3)
	8	2.9% (2.3–3.7)	Self-harm	3.4% (2.5–6.3)	Self-harm	2.9% (2.1–6.3)	Self-harm	2.9% (2.1–6.3)	Self-harm	2.9% (2.1–6.3)
	9	2.9% (1.9–5.3)	Ischemic heart disease	2.9% (2.4–3.5)	Ischemic heart disease	2.9% (1.9–4.2)	Diarrheal diseases	2.9% (1.9–4.2)	Diarrheal diseases	2.9% (1.9–4.2)
	10	2.8% (2.3–3.4)	Malaria	2.9% (1.5–5.1)	Malaria	2.8% (2.3–3.5)	Ischemic heart disease	2.8% (2.3–3.5)	Ischemic heart disease	2.8% (2.3–3.5)
20–24 years	1	8.2% (5.8–11)	Maternal hemorrhage	7.7% (5.7–10.2)	Maternal hemorrhage	7.2% (3.1–10.9)	War and legal intervention	7.2% (3.1–10.9)	War and legal intervention	7.2% (3.1–10.9)
	2	7.1% (4.4–10.7)	Tuberculosis	6.2% (4–8.5)	Tuberculosis	5.9% (3.7–8.1)	Tuberculosis	5.9% (3.7–8.1)	Tuberculosis	5.9% (3.7–8.1)
	3	5.6% (3.7–8.2)	Natural disaster	5.9% (3.2–8.5)	Natural disaster	5.6% (3.7–8.1)	Maternal hemorrhage	5.6% (3.7–8.1)	Maternal hemorrhage	5.6% (3.7–8.1)
	4	4.1% (1.5–6.6)	Maternal hypertension	5.4% (3.8–7.4)	Maternal hypertension	5.0% (3.1–7.6)	Maternal hypertension	5.0% (3.1–7.6)	Maternal hypertension	5.0% (3.1–7.6)
	5	3.9% (2.4–5.8)	Motor vehicle road inj.	3.6% (2.9–4.4)	Motor vehicle road inj.	3.6% (3–4.4)	Ischemic heart disease	3.6% (3–4.4)	Ischemic heart disease	3.6% (3–4.4)
	6	3.6% (3–4.3)	Ischemic heart disease	3.5% (2.9–4.3)	Ischemic heart disease	3.5% (2.9–4.3)	Motor vehicle road inj.	3.5% (2.9–4.3)	Motor vehicle road inj.	3.5% (2.9–4.3)
	7	2.9% (2.4–3.5)	Self-harm	3.3% (2.4–6.2)	Self-harm	3.1% (2.3–6.5)	Self-harm	3.1% (2.3–6.5)	Self-harm	3.1% (2.3–6.5)
	8	2.8% (2.2–3.7)	Hemorrhagic stroke	2.6% (2.2–3.2)	Hemorrhagic stroke	2.9% (1.7–4.5)	Other maternal disorders	2.9% (1.7–4.5)	Other maternal disorders	2.9% (1.7–4.5)
	9	2.8% (2–3.9)	Abortion, miscarriage, ectopic	2.3% (1.5–3.3)	Abortion, miscarriage, ectopic	2.6% (2.1–3.3)	Hemorrhagic stroke	2.6% (2.1–3.3)	Hemorrhagic stroke	2.6% (2.1–3.3)
	10	2.8% (1.7–4.4)	Other maternal disorders	2.2% (1.6–3.1)	Other maternal disorders	2.2% (1.5–3)	Cirrhosis other	2.2% (1.5–3)	Cirrhosis other	2.2% (1.5–3)

Table 2 continued

		2005			2015		
Top ten causes of mortality in females and males		Rank	Cause	Proportion	Cause	Proportion	Proportion
Males							
1990							
10–14 years	1	Natural disaster	9.8% (15.1–3.9)	Natural disaster	16.1% (9.4–22.1)	War and legal intervention	12.2% (5.5–18.1)
	2	Drowning	8.6% (10.9–6.5)	Drowning	6.4% (5.2–7.7)	Other unintentional	6.9% (4.6–10.1)
	3	Lower respiratory infect.	5.4% (7.1–3.4)	Motor vehicle road inj.	5.7% (4.8–7)	Drowning	6.4% (5.2–7.9)
	4	Motor vehicle road inj.	5.3% (6.3–4.2)	Other unintentional	5.6% (3.6–8.2)	Motor vehicle road inj.	6.0% (4.8–7.5)
	5	Pedestrian road inj.	5.3% (6.6–4)	Pedestrian road inj.	5.0% (3.9–6.2)	Lower respiratory infect.	4.8% (3.5–6.3)
	6	Diarrheal diseases	4.1% (6–2.7)	Lower respiratory infect.	4.2% (3.2–5.5)	Pedestrian road inj.	4.7% (3.6–5.9)
	7	Measles	3.7% (9.2–1)	Typhoid fever	4.0% (2.2–6.8)	Typhoid fever	4.0% (2.1–7)
	8	Other unintentional	3.7% (5.4–2.5)	Diarrheal diseases	3.1% (1.9–4.7)	Diarrheal diseases	2.9% (1.8–4.6)
	9	Typhoid fever	3.6% (6.1–1.9)	Hemorrhagic stroke	2.3% (1.9–2.6)	Congenital heart	2.6% (1.8–3.4)
	10	Hemorrhagic stroke	3.3% (4.1–2.7)	Congenital heart	2.2% (1.4–2.9)	Hemorrhagic stroke	2.2% (1.9–2.6)
15–19 years	1	Natural disaster	9.6% (3.8–14.8)	Natural disaster	12.5% (7.2–17.5)	War and legal intervention	27.2% (13.2–37.9)
	2	Motor vehicle road inj.	8.9% (6.8–11.8)	Motor vehicle road inj.	9.8% (8.1–12.1)	Other unintentional	8.4% (5–12.5)
	3	Drowning	6.7% (4.8–8.9)	Other unintentional	7.9% (5.2–11.3)	Motor vehicle road inj.	8.4% (6.5–10.8)
	4	Other unintentional	5.3% (3.5–7.5)	Pedestrian road inj.	5.4% (4.1–6.8)	Drowning	4.0% (3.1–5.2)
	5	Pedestrian road inj.	4.7% (2.9–6.2)	Drowning	5.1% (4.3–6.2)	Pedestrian road inj.	4.0% (2.9–5.3)
	6	War and legal intervention	4.3% (1.5–9.3)	Motorcyclist road inj.	4.0% (2.9–5.4)	Self-harm	2.9% (2.2–3.7)
	7	Self-harm	3.1% (2.4–4)	Self-harm	3.5% (2.8–4.2)	Motorcyclist road inj.	2.8% (1.8–3.9)
	8	Motorcyclist road inj.	3.0% (1.8–4.5)	War and legal intervention	3.4% (1.7–5)	Lower respiratory infect.	2.3% (1.6–3.1)
	9	Lower respiratory infect.	3.0% (2–3.8)	Lower respiratory infect.	2.4% (1.8–3.1)	Physical violence by firearm	2.2% (1.2–3.3)
	10	Hemorrhagic stroke	2.8% (2.2–3.4)	Hemorrhagic stroke	2.2% (1.8–2.5)	Other physical violence	1.8% (0.8–2.9)
20–24 years	1	Motor vehicle road inj.	9.9% (7.7–12.9)	Motor vehicle road inj.	11.1% (9.4–13.4)	War and legal intervention	27.7% (14.2–38.4)
	2	Natural disaster	6.8% (2.7–10.8)	Natural disaster	8.9% (5–12.8)	Motor vehicle road inj.	8.9% (7–11.3)
	3	War and legal intervention	5.3% (1.8–11.5)	Other unintentional	6.8% (4.4–10.1)	Other unintentional	6.8% (4–10.3)
	4	Pedestrian road inj.	5.0% (3.1–6.5)	Pedestrian road inj.	5.7% (4.4–7)	Pedestrian road inj.	4.2% (3.1–5.4)
	5	Other unintentional	5.0% (3.3–7.1)	Self-harm	4.6% (3.8–5.5)	Self-harm	3.8% (3–5)
	6	Drowning	5.0% (3.4–6.7)	War and legal intervention	4.3% (2.2–6.4)	Motorcyclist road inj.	2.8% (2–4)
	7	Self-harm	4.2% (3.3–5.4)	Motorcyclist road inj.	4.1% (3–5.6)	Drowning	2.8% (2.2–3.6)
	8	Tuberculosis	3.7% (2.4–5.9)	Drowning	3.7% (3.1–4.4)	Other physical violence	2.6% (1–4)

Table 2 continued

Top ten causes of mortality in females and males					
Males					
1990			2015		
Rank	Cause	Proportion	Cause	Proportion	Proportion
9	<i>Motorcyclist road inj.</i>	3.1% (1.8–4.7)	<i>Other physical violence</i>	3.0% (1.3–4.1)	2.4% (1.3–3.6)
10	Ischemic heart disease	3.0% (2.5–3.6)	Ischemic heart disease	2.7% (2.3–3.2)	2.3% (1.8–2.9)

Global burden of disease study 2015, Eastern Mediterranean Region, 1990–2015

Italic defines communicable, maternal, neonatal and nutritional diseases

Bold defines non-communicable diseases

Bold, italic defines injuries

Health risks and determinants

The prevalence of selected health risks is provided in e-Figure 3. The prevalence of overweight and obesity was highest among countries with a higher SDI in the region, and was generally similar for males and females. Rates of daily tobacco smoking among males aged 10–24 years ranged from 1.9% in Sudan to 18% in Kuwait, but were less than 5% for females in the region. Similarly, the prevalence of binge drinking was higher among males than females at all ages, but was less than 10% for both sexes in most EMR countries. Unmet need for contraception was high among the 11 countries for which data are available (e-Figure 4). More than one third of females who are married or in union have unmet need for contraception in Pakistan, Djibouti, Somalia, Sudan, and Yemen. These countries also have among the highest rates of adolescent birth rates in the region, adolescent fertility the greatest in Somalia (114.7 live births per 1000 females aged 15–19 in 2015). There was also great variation in educational attainment in the EMR region. Low-SDI countries affected by protracted insecurity and conflict have the lowest mean number of years of completed education, most notably for females. Rates of unemployment among 15- to 24-year olds also vary considerably, and were generally higher for females than males.

Discussion

This study is the first systematic analysis of adolescent health in the EMR. The findings suggest dramatic shifts in the health of adolescents living in the EMR over the past 25 years. Communicable diseases and the health consequences of natural disasters have reduced substantially, but these gains have largely been offset by war and the emergence of NCDs including mental health disorders, unintentional injury, and self-harm. Indeed, adolescents living in Syria, Afghanistan, and Somalia experience amongst the largest burdens of disease and injury of all adolescents globally (Patton et al. 2016). Even with the return of peace and security to this region, adolescents will have a persisting poor health profile that will pose a barrier to socioeconomic growth and development of the EMR (The World Bank 2006).

The substantial reductions in mortality and morbidity due to communicable disease, maternal disorders, and natural disasters in the EMR are likely the result of socioeconomic growth and development, educational participation, and interventions through the health system. Recent wars and civil conflict, however, threaten the foundations on which these gains were made, with the risk of resurgence of many of these conditions. This is in

Table 3 Leading contributors to poor health (YLDs) for adolescents in the Eastern Mediterranean Region, in 1990, 2005, 2015

Top ten causes of years lived with a disability (YLDs) in females and males				
Females				
Rank	1990		2015	
	Cause	Proportion	Cause	Proportion
10–14 years	1	<i>Iron-deficiency anemia</i>	<i>Iron-deficiency anemia</i>	<i>Iron-deficiency anemia</i>
	2	Migraine	Migraine	Migraine
	3	Anxiety disorders	Anxiety disorders	Anxiety disorders
	4	Asthma	Conduct disorder	Conduct disorder
	5	Conduct disorder	Asthma	Asthma
	6	Major depressive disorder	Major depressive disorder	Major depressive disorder
	7	Low back pain	Acne vulgaris	Acne vulgaris
	3	Epilepsy	Low back pain	Low back pain
	9	Acne vulgaris	Epilepsy	Dermatitis
	10	Dermatitis	Dermatitis	Epilepsy
15–19 years	1	<i>Iron-deficiency anemia</i>	<i>Iron-deficiency anemia</i>	<i>Iron-deficiency anemia</i>
	2	Major depressive disorder	Major depressive disorder	Migraine
	3	Migraine	Migraine	Major depressive disorder
	4	Anxiety disorders	Anxiety disorders	Anxiety disorders
	5	Low back pain	Low back pain	Low back pain
	6	Acne vulgaris	Acne vulgaris	Acne vulgaris
	7	Asthma	Other musculoskeletal	Other musculoskeletal
	8	Conduct disorder	Conduct disorder	Conduct disorder
	9	Other musculoskeletal	Asthma	Asthma
	10	Epilepsy	Epilepsy	Epilepsy
20–24 years	1	<i>Iron-deficiency anemia</i>	<i>Iron-deficiency anemia</i>	<i>Iron-deficiency anemia</i>
	2	Major depressive disorder	Major depressive disorder	Major depressive disorder
	3	Migraine	Migraine	Migraine
	4	Anxiety disorders	Anxiety disorders	Anxiety disorders
	5	Low back pain	Low back pain	Low back pain
	6	Other musculoskeletal	Other musculoskeletal	Other musculoskeletal
	7	Bipolar disorder	Neck pain	Bipolar disorder
	8	Neck pain	Bipolar disorder	Neck pain
	9	Other mental and substance	Other mental and substance	Other mental and substance
	10	Premenstrual syndrome	Premenstrual syndrome	Medication overuse

Table 3 continued

		1990			2005			2015		
		Rank	Cause	Proportion	Cause	Proportion	Cause	Proportion	Proportion	
Males										
Top ten causes of years lived with a disability (YLDs) in females and males										
10–14 years	1	<i>Iron-deficiency anemia</i>		18.9% (16.6–20.9)	<i>Iron-deficiency anemia</i>	19.4% (17–21.5)	<i>Iron-deficiency anemia</i>	19.5% (17–21.6)		
	2	Conduct disorder		7.5% (4.7–10.7)	Conduct disorder	7.9% (5–11.3)	Conduct disorder	8.1% (5.1–11.5)		
	3	Asthma		5.3% (3.9–6.9)	Asthma	5.2% (3.8–6.8)	Asthma	5.1% (3.7–6.8)		
	4	Anxiety disorders		4.0% (2.8–5.5)	Anxiety disorders	4.2% (3–5.9)	Anxiety disorders	4.3% (3.1–6.1)		
	5	Migraine		3.3% (2–4.8)	Migraine	3.5% (2.2–5.2)	Migraine	3.6% (2.2–5.3)		
	6	Low back pain		2.9% (2.2–3.9)	Low back pain	3.1% (2.3–4)	Low back pain	3.0% (2.3–4.1)		
	7	Epilepsy		2.9% (2–3.9)	Major depressive disorder	2.9% (1.7–4.5)	Major depressive disorder	3.0% (1.8–4.6)		
	8	Major depressive disorder		2.7% (1.6–4.3)	Acne vulgaris	2.8% (1.5–4.7)	Acne vulgaris	2.9% (1.5–4.9)		
	9	Acne vulgaris		2.5% (1.3–4.2)	Epilepsy	2.6% (1.8–3.4)	Epilepsy	2.5% (1.7–3.5)		
	10	Thalassemias trait		2.2% (1.9–2.4)	Thalassemias trait	2.4% (2.1–2.6)	Thalassemias trait	2.4% (2.1–2.7)		
15–19 years	1	<i>Iron-deficiency anemia</i>		7.7% (6.2–9.6)	Major depressive disorder	6.9% (4.5–9.9)	Major depressive disorder	7.0% (4.6–9.9)		
	2	Major depressive disorder		6.6% (4.3–9.6)	<i>Iron-deficiency anemia</i>	6.8% (5.2–8.6)	<i>Iron-deficiency anemia</i>	6.5% (5–8.3)		
	3	Low back pain		6.3% (4.9–8.1)	Low back pain	6.5% (4.9–8.3)	Low back pain	6.4% (4.8–8.3)		
	4	Conduct disorder		5.7% (3.5–8.3)	Conduct disorder	6.0% (3.8–8.7)	Conduct disorder	6.0% (3.7–8.8)		
	5	Migraine		4.9% (3–7.1)	Migraine	5.2% (3.2–7.5)	Migraine	5.3% (3.3–7.7)		
	6	Anxiety disorders		4.6% (3.3–6.3)	Anxiety disorders	4.9% (3.5–6.6)	Anxiety disorders	4.9% (3.6–6.7)		
	7	Acne vulgaris		3.7% (1.9–6.4)	Acne vulgaris	4.1% (2.1–6.8)	Acne vulgaris	4.2% (2.2–7.1)		
	8	Asthma		3.5% (2.6–4.6)	Other musculoskeletal	3.8% (2.7–5.3)	Other musculoskeletal	4.0% (2.7–5.6)		
	9	Other musculoskeletal		3.0% (2–4.3)	Asthma	3.5% (2.5–4.6)	Asthma	3.3% (2.4–4.5)		
	10	Epilepsy		2.6% (1.9–3.5)	Epilepsy	2.5% (1.8–3.3)	War and legal intervention	2.7% (1.2–5)		
20–24 years	1	Major depressive disorder		7.7% (4.9–11.4)	Major depressive disorder	7.9% (5–11.8)	Major depressive disorder	8.0% (5.1–11.7)		
	2	Low back pain		7.3% (5.7–9.4)	Low back pain	7.4% (5.7–9.4)	Low back pain	7.4% (5.7–9.4)		
	3	Migraine		5.7% (3.7–8.1)	Migraine	5.8% (3.8–8.3)	Migraine	5.9% (3.8–8.5)		
	4	Other mental and substance		4.2% (3.4–5.3)	Opioid use disorders	5.1% (3.6–6.8)	Other musculoskeletal	4.9% (3.5–6.6)		
	5	<i>Iron-deficiency anemia</i>		4.2% (3–5.5)	Other musculoskeletal	4.6% (3.3–6.1)	Opioid use disorders	4.9% (3.5–6.6)		
	6	Opioid use disorders		4.2% (2.9–5.6)	Other mental and substance	4.4% (3.6–5.5)	Other mental and substance	4.5% (3.5–5.5)		
	7	Anxiety disorders		3.9% (2.7–5.5)	Anxiety disorders	4.0% (2.8–5.5)	Anxiety disorders	4.0% (2.8–5.7)		
	8	War and legal intervention		3.8% (2–6.1)	<i>Iron-deficiency anemia</i>	3.6% (2.6–4.8)	War and legal intervention	3.6% (1.6–6.3)		

Table 3 continued

Top ten causes of years lived with a disability (YLDs) in females and males					
Males					
1990			2015		
Rank	Cause	Proportion	Cause	Proportion	Proportion
9	Other musculoskeletal	3.5% (2.5–4.8)	Neck pain	2.5% (1.7–3.5)	3.1% (2.2–4.1)
10	Other unintentional inj.	2.3% (2–2.7)	Bipolar disorder	2.4% (1.6–3.5)	2.4% (1.6–3.5)

Global burden of disease study 2015, Eastern Mediterranean Region, 1990–2015

Italic defines communicable, maternal, neonatal and nutritional diseases

Bold defines non-communicable diseases

Bold, italic defines injuries

YLDs years of life with disability

addition to the growing burden of NCDs and injuries. Renewed efforts to consolidate gains made in communicable disease and maternal health will be required. The Lancet Commission described the benefits that can accrue from investments in adolescence. Without these investments, the EMR region risks poor health across adolescence, adulthood, and in the next generation (Patton et al. 2016).

War and legal interventions (deaths due to law enforcement, regardless of their legality) were the leading causes of mortality for adolescents aged 10–24 years of both genders in the EMR. While not all countries in the EMR are affected by conflict, the magnitude of mortality in those countries that are affected signifies this as a priority for the region. It should also be noted, however, that at a population level (all ages combined), war and legal intervention is only the fifth leading cause of mortality in the EMR (GBD 2015 Eastern Mediterranean Region Collaborators and Mokdad 2017). This may reflect competing causes of mortality at other ages, or it may signify that war and legal interventions disproportionately affect adolescents, particularly 20- to 24-year-old males. In addition to the physical injuries and disability that accompany conflict, violence and trauma at this critical developmental stage carry a risk of persisting effects on future mental health and well-being. War and conflict are also likely to result in disruption to quality education, social infrastructure, and community development, which have profound implications for health and well-being across the course of one's life. This may explain why expected DALYs in countries which have experienced large burdens of conflict remain high.

In addition to the health status of adolescents, we explored the burden of risk behavior for future health. Tobacco smoking and high body mass were common risks where interventions during adolescence have the potential to avert later ischemic heart disease, the leading cause of poor health in the region. Of note, estimates of tobacco smoking reported here do not include Sisha smoking which is prevalent in some countries of the EMR and harmful (Maziak et al. 2004). Low rates of education completion in many countries including Afghanistan, Somalia, and Yemen are a major obstacle to growth and future prosperity of this region. High rates of adolescent pregnancy represent an important target for action to improve health and life opportunities for girls and young women. Unmet need for contraception is very high, and is likely to also signify high rates of unmet need for other essential health interventions, particularly for culturally sensitive needs such as sexually transmitted infections and mental health. Given adolescents face barriers in accessing health facilities, there is a need to explore other approaches such as community-based delivery or school health services (Tylee et al. 2007). There is

Table 4 Leading contributors to poor health (DALYs) for adolescents in the Eastern Mediterranean Region, in 1990, 2005, 2015

Top ten causes of disability- adjusted life years (DALYs) in females and males							
Females							
Rank	1990		2005		2015		
	Cause	Proportion	Cause	Proportion	Cause	Proportion	
10–14 years	1	<i>Iron-deficiency anemia</i>	7.8% (6.1–9.8)	<i>Iron-deficiency anemia</i>	8.8% (6.9–11)	<i>Iron-deficiency anemia</i>	9.9% (7.9–12.1)
	2	<i>Natural disaster</i>	4.5% (2–6.9)	<i>Natural disaster</i>	7.0% (4–9.8)	War and legal intervention	4.5% (2.3–6.9)
	3	<i>Diarrheal diseases</i>	3.4% (2.5–4.6)	Migraine	4.0% (2.5–5.7)	Migraine	4.5% (2.8–6.4)
	4	Migraine	3.4% (2.1–5)	<i>Anxiety disorders</i>	3.6% (2.5–4.9)	<i>Anxiety disorders</i>	4.1% (2.9–5.6)
	5	Asthma	3.3% (2.4–4.3)	Asthma	3.3% (2.5–4.3)	Asthma	3.8% (2.7–5)
	6	<i>Anxiety disorders</i>	3.2% (2.2–4.3)	Conduct disorder	3.1% (1.8–4.7)	Conduct disorder	3.5% (2–5.3)
	7	<i>Lower respiratory infect.</i>	3.0% (1.8–4)	<i>Diarrheal diseases</i>	2.7% (1.2–3.8)	Major depressive disorder	2.6% (1.6–3.7)
	8	<i>Measles</i>	2.7% (0.8–6.5)	<i>Typhoid fever</i>	2.5% (1.4–4.2)	<i>Lower respiratory infect.</i>	2.3% (1.5–3.2)
	9	Conduct disorder	2.7% (1.5–4.2)	Major depressive disorder	2.3% (1.4–3.3)	Epilepsy	2.2% (1.6–2.9)
	10	<i>Tuberculosis</i>	2.4% (1.3–3.7)	<i>Lower respiratory infect.</i>	2.2% (1.5–3)	<i>Diarrheal diseases</i>	2.2% (1.6–3.1)
15–19 years	1	<i>Iron-deficiency anemia</i>	5.3% (3.9–6.8)	<i>Iron-deficiency anemia</i>	5.4% (4.1–6.8)	<i>Iron-deficiency anemia</i>	5.5% (4.2–7.1)
	2	Major depressive disorder	4.0% (2.7–5.6)	<i>Natural disaster</i>	4.6% (2.7–6.4)	War and legal intervention	5.3% (2.6–8.1)
	3	Migraine	4.0% (2.4–5.7)	Major depressive disorder	4.2% (2.9–5.9)	Migraine	4.6% (2.8–6.6)
	4	<i>Anxiety disorders</i>	3.4% (2.4–4.7)	Migraine	4.2% (2.6–6.1)	Major depressive disorder	4.5% (3.1–6.3)
	5	<i>Natural disaster</i>	3.2% (1.4–5.1)	<i>Anxiety disorders</i>	3.7% (2.6–4.9)	<i>Anxiety disorders</i>	3.9% (2.8–5.3)
	6	<i>Tuberculosis</i>	3.1% (1.9–4.7)	Low back pain	2.6% (2–3.5)	Low back pain	2.7% (2–3.6)
	7	<i>Maternal hemorrhage</i>	2.7% (1.9–3.9)	<i>Tuberculosis</i>	2.6% (1.6–3.7)	<i>Tuberculosis</i>	2.3% (1.4–3.3)
	8	Low back pain	2.5% (1.9–3.3)	<i>Maternal hemorrhage</i>	2.6% (1.8–3.7)	Other musculoskeletal	2.3% (1.6–3.1)
	9	<i>Diarrheal diseases</i>	2.4% (1.8–3.3)	Asthma	2.1% (1.5–2.7)	Asthma	2.2% (1.6–2.9)
	10	Asthma	2.2% (1.7–2.8)	Other musculoskeletal	2.0% (1.4–2.8)	Acne vulgaris	2.2% (1.1–3.8)
20–24 years	1	<i>Iron-deficiency anemia</i>	5.0% (3.7–6.6)	<i>Iron-deficiency anemia</i>	4.7% (3.5–6.2)	Major depressive disorder	5.0% (3.3–7)
	2	<i>Maternal hemorrhage</i>	4.2% (3–5.8)	Major depressive disorder	4.6% (3–6.5)	<i>Iron-deficiency anemia</i>	4.9% (3.6–6.3)
	3	Major depressive disorder	4.2% (2.8–6)	Migraine	4.1% (2.6–6.1)	Migraine	4.5% (2.9–6.7)
	4	<i>Tuberculosis</i>	3.9% (2.5–5.6)	<i>Maternal hemorrhage</i>	3.7% (2.6–5.1)	War and legal intervention	3.7% (1.8–5.6)
	5	Migraine	3.8% (2.4–5.6)	<i>Natural disaster</i>	3.5% (2.1–5)	<i>Anxiety disorders</i>	3.5% (2.4–4.8)
	6	<i>Maternal hypertension</i>	3.1% (2–4.4)	<i>Anxiety disorders</i>	3.2% (2.3–4.4)	Low back pain	3.3% (2.4–4.5)
	7	<i>Anxiety disorders</i>	2.9% (2–4)	<i>Tuberculosis</i>	3.2% (2.1–4.5)	Other musculoskeletal	3.1% (2.2–4.2)
	8	Low back pain	2.9% (2.1–3.8)	Low back pain	3.2% (2.3–4.2)	<i>Tuberculosis</i>	2.9% (1.9–4)
	9	<i>Natural disaster</i>	2.3% (0.9–3.7)	<i>Maternal hypertension</i>	2.7% (1.9–3.8)	<i>Maternal hemorrhage</i>	2.6% (1.6–3.8)
	10	<i>Other maternal disorders</i>	2.1% (1.3–3.1)	Other musculoskeletal	2.7% (1.9–3.6)	<i>Maternal hypertension</i>	2.4% (1.5–3.7)

Table 4 continued

Top ten causes of disability- adjusted life years (DALYs) in females and males					
Males					
1990		2005		2015	
Rank	Cause	Proportion	Cause	Proportion	Cause
10-14 years					
1	<i>Iron-deficiency anemia</i>	8.4% (6.5-10.6)	<i>Iron-deficiency anemia</i>	9.5% (7.4-11.8)	<i>Iron-deficiency anemia</i>
2	<i>Natural disaster</i>	5.8% (2.4-9.1)	<i>Natural disaster</i>	8.9% (5-12.7)	<i>War and legal intervention</i>
3	<i>Drowning</i>	4.9% (3.4-6.3)	<i>Conduct disorder</i>	3.9% (2.4-5.8)	<i>Conduct disorder</i>
4	<i>Conduct disorder</i>	3.3% (2-5)	<i>Other unintentional</i>	3.6% (2.6-5)	<i>Other unintentional</i>
5	<i>Motor vehicle road inj.</i>	3.0% (2.3-4)	<i>Drowning</i>	3.3% (2.6-4.1)	<i>Asthma</i>
6	<i>Lower respiratory infect.</i>	3.0% (2-4.1)	<i>Asthma</i>	3.2% (2.4-4.1)	<i>Drowning</i>
7	<i>Asthma</i>	3.0% (2.3-3.9)	<i>Motor vehicle road inj.</i>	3.0% (2.4-3.7)	<i>Motor vehicle road inj.</i>
8	<i>Pedestrian road inj.</i>	3.0% (2.2-3.9)	<i>Pedestrian road inj.</i>	2.6% (2-3.2)	<i>Anxiety disorders</i>
9	<i>Other unintentional</i>	2.8% (2.2-3.8)	<i>Lower respiratory infect.</i>	2.2% (1.6-3)	<i>Lower respiratory infect.</i>
10	<i>Diarrheal diseases</i>	2.6% (1.8-3.7)	<i>Typhoid fever</i>	2.1% (1.1-3.6)	<i>Pedestrian road inj.</i>
15-19 years					
1	<i>Natural disaster</i>	6.0% (2.5-9.3)	<i>Natural disaster</i>	7.9% (4.4-11.3)	<i>War and legal intervention</i>
2	<i>Motor vehicle road inj.</i>	5.3% (4-7.1)	<i>Motor vehicle road inj.</i>	5.9% (4.8-7.5)	<i>Other unintentional</i>
3	<i>Other unintentional</i>	4.0% (3-5.4)	<i>Other unintentional</i>	5.6% (3.9-7.7)	<i>Motor vehicle road inj.</i>
4	<i>Drowning</i>	4.0% (2.8-5.4)	<i>Pedestrian road inj.</i>	3.2% (2.4-4.1)	<i>Major depressive disorder</i>
5	<i>Iron-deficiency anemia</i>	3.3% (2.4-4.4)	<i>Drowning</i>	3.1% (2.5-3.8)	<i>Iron-deficiency anemia</i>
6	<i>War and legal intervention</i>	3.2% (1.5-6.2)	<i>Iron-deficiency anemia</i>	2.8% (2-3.8)	<i>Drowning</i>
7	<i>Pedestrian road inj.</i>	2.8% (1.7-3.7)	<i>Major depressive disorder</i>	2.8% (1.7-4.2)	<i>Pedestrian road inj.</i>
8	<i>Major depressive disorder</i>	2.7% (1.7-4.1)	<i>Low back pain</i>	2.6% (1.9-3.5)	<i>Low back pain</i>
9	<i>Low back pain</i>	2.6% (1.9-3.5)	<i>Motorcyclist road inj.</i>	2.4% (1.7-3.3)	<i>Conduct disorder</i>
10	<i>Conduct disorder</i>	2.3% (1.4-3.6)	<i>Conduct disorder</i>	2.4% (1.4-3.7)	<i>Migraine</i>
20-24 years					
1	<i>Motor vehicle road inj.</i>	6.2% (4.9-8.1)	<i>Motor vehicle road inj.</i>	7.1% (5.8-8.7)	<i>War and legal intervention</i>
2	<i>War and legal intervention</i>	4.7% (2.3-8.7)	<i>Natural disaster</i>	5.9% (3.3-8.5)	<i>Motor vehicle road inj.</i>
3	<i>Natural disaster</i>	4.4% (1.8-7)	<i>Other unintentional</i>	5.2% (3.7-7.3)	<i>Other unintentional</i>
4	<i>Other unintentional</i>	4.0% (2.9-5.4)	<i>Pedestrian road inj.</i>	3.6% (2.7-4.5)	<i>Pedestrian road inj.</i>
5	<i>Pedestrian road inj.</i>	3.1% (1.9-4.2)	<i>War and legal intervention</i>	3.4% (2-4.8)	<i>Major depressive disorder</i>
6	<i>Drowning</i>	3.1% (2.1-4.2)	<i>Major depressive disorder</i>	2.9% (1.8-4.7)	<i>Low back pain</i>
7	<i>Major depressive disorder</i>	2.9% (1.8-4.5)	<i>Self-harm</i>	2.9% (2.4-3.5)	<i>Self-harm</i>

Table 4 continued

Top ten causes of disability-adjusted life years (DALYs) in females and males					
Males					
1990			2015		
Rank	Cause	Proportion	Cause	Proportion	Proportion
8	Low back pain	2.8% (2–3.8)	Opioid use disorders	2.8% (2.2–3.4)	2.5% (1.9–3.2)
9	<i>Self-harm</i>	<i>2.6% (2.1–3.4)</i>	Low back pain	2.7% (1.9–3.7)	2.0% (1.3–3.1)
10	<i>Tuberculosis</i>	<i>2.5% (1.6–3.9)</i>	<i>Motorcyclist road inj.</i>	<i>2.6% (1.9–3.6)</i>	<i>1.9% (1.3–2.6)</i>

Global burden of disease study 2015, Eastern Mediterranean Region, 1990–2015

Italic defines communicable, maternal, neonatal and nutritional diseases

Bold defines non-communicable diseases

Bold, italic defines injuries

DALYs disability-adjusted life-years

also the need for community-based interventions to address some of the sociocultural barriers that contribute to high unmet need for interventions relating to sexual and reproductive health (Patton et al. 2016).

As over half of the region's adolescents live in Pakistan, Iran, and Egypt (Table 1), a regional response must prioritize these three countries. This is challenging, however, given the different stages of development and the very different needs of adolescents across these countries. For example, the burden of disease experienced by adolescents in Egypt is predominantly caused by NCDs, which require interventions to address the burden of chronic illness and health risks such as tobacco smoking and obesity (Patton et al. 2016). In addition to NCDs, adolescents living in Iran are burdened by injury (particularly relating to transport injury) which requires a suite of inter-sectoral actions (WHO 2017a). Adolescents living in Pakistan experience a “multi-burden” profile of disease, with a large burden of communicable, nutritional, and reproductive poor health in addition to NCDs and injury. However, in countries such as Afghanistan, Somalia, and Sudan, adolescents represent almost a third of the country-level population and experience a particularly large and complex burden of disease. It is, therefore, important not to neglect their health needs (or indeed other countries in the EMR).

What this analysis highlights is that unintentional injury, mental health, sexual health, substance use, and self-harm are increasingly important health issues for adolescents in the EMR. While these are health issues common to adolescents globally (Patton et al. 2016), they have typically sat at the margins (if at all) of policy, program, and data collection in EMR, given religious and cultural sensitivities. These findings highlight the need to better align health actions, including data monitoring of sensitive health outcomes, including risks, in this region to these needs.

Our analysis has important limitations. Firstly, there is considerable variation in the availability and quality of primary data for adolescent health. This includes paucity of data for some age groups (particularly 10- to 14-year olds), and for many health outcomes and risks of importance during these important developmental years (Mokdad et al. 2016b; Patton et al. 2012; The Global Burden of Disease Child and Adolescent Health Collaboration 2017). Availability of timely, quality data is likely to be particularly poor in settings of conflict and insecurity, which affects many countries in this region. The poor quality of primary data necessitated the use of modeled estimates, and some of these modeled estimates may have over- or under-estimated the true burden. For example, ischemic heart disease was found to be a leading cause of mortality amongst males aged 20–24 years, a cause of death more commonly associated with adulthood. Premature death due to cardiovascular disease is possible during adolescence, particularly in

the context of adolescent obesity which is prevalent in EMR (Franks et al. 2010). This finding may also be an artifact of disease modeling, as ischemic heart disease is the leading cause of mortality in the EMR, and these deaths are modeled to have their onset after 0.1 years of age (GBD 2015 Eastern Mediterranean Region Cardiovascular Disease Collaborators and Mokdad 2017; GBD 2015 Eastern Mediterranean Region Collaborators and Mokdad 2017; GBD Mortality and Causes of Death Collaborators 2016). The findings of this study should therefore be interpreted as not only indicating priority areas to address adolescent health in the EMR, but also where data collection efforts should focus. A further limitation is that the broader impacts of armed conflict on adolescent health and well-being, beyond mortality, are not captured by the 2015 GBD study. These include participation in education and employment, as well as the impacts of trauma on adolescent development and wellbeing. Additionally, some important health issues such as female genital cutting/mutilation (common in countries such as Somalia) are not included in GBD 2015 (UNICEF 2016a).

There are several regional efforts that may facilitate addressing the needs of adolescents in the EMR. For example, a coalition of youth advocates for health in the EMR has been established (Alaovie et al. 2017). There is a joint UN strategy for youth in the region (IATTTYP 2015). UNICEF has also published guidance around good practice with adolescent and youth programming (UNICEF 2016b). This study compliments these efforts, and helps to inform some priority areas for health. For conflict-affected countries, the focus must clearly be on the return of peace and stability and the rebuilding of health, education, and social systems. In doing so, it is important to design services that meet the needs of adolescents. For countries not affected by conflict, health actions include the need to re-orientate health systems to focus on prevention and the growing burden of NCDs. This needs to extend to inter-sectoral actions to address the broader determinants of NCDs and injuries. Without urgent action, there is a risk that profiles of adolescent health will continue to deteriorate with consequences for future population health and wellbeing, productivity, and ultimately the stability of civil society.

GBD 2015 Eastern Mediterranean Region Adolescent Health Collaborators: Peter Azzopardi, PhD, Burnet Institute, Melbourne, VIC, Australia; Murdoch Children's Research Institute, Melbourne, Victoria, Australia; Wardliparingga Aboriginal Research Unit, South Australian Health and Medical Research Institute (SAHMRI), Adelaide, South Australia, Australia. Karly Cini, MCLinEpi, Centre for Adolescent Health, Murdoch Childrens Research Institute, Melbourne, Victoria, Australia. Elissa Kennedy, MBBS, MPH, Burnet Institute, Melbourne, VIC, Australia. Susan Sawyer, MD, Murdoch Childrens Research Institute, The University of Melbourne, Parkville, Victoria, Australia. Charbel El Bcheraoui, PhD, Institute for Health Metrics and Evaluation, University of Washington, Seattle,

Washington, United States. Raghid Charara, MD, American University of Beirut, Beirut, Lebanon. Ibrahim Khalil, MD, Institute for Health Metrics and Evaluation, University of Washington, Seattle, Washington, United States. Maziar Moradi-Lakeh, MD, Department of Community Medicine, Preventive Medicine and Public Health Research Center, Gastrointestinal and Liver Disease Research Center (GILDRC), Iran University of Medical Sciences, Tehran, Iran. Michael Collison, BS, Institute for Health Metrics and Evaluation, University of Washington, Seattle, Washington, United States. Rima A. Afifi, PhD, American University of Beirut, Beirut, Lebanon. Jamela Al-Raiby, MD, World Health Organization. Kristopher J. Krohn, BA, Institute for Health Metrics and Evaluation, University of Washington, Seattle, Washington, United States. Farah Daoud, BA/BS, Institute for Health Metrics and Evaluation, University of Washington. Adrienne Chew, ND, Institute for Health Metrics and Evaluation, University of Washington, Seattle, Washington, United States. Ashkan Afshin, MD, Institute for Health Metrics and Evaluation, University of Washington, Seattle, Washington, United States. Kyle J. Foreman, PhD, Institute for Health Metrics and Evaluation, University of Washington, Seattle, Washington, United States; Imperial College London, London, United Kingdom. Nicholas J. Kassebaum, MD, Institute for Health Metrics and Evaluation, University of Washington, Seattle, Washington, United States; Department of Anesthesiology & Pain Medicine, Seattle Children's Hospital, Seattle, Washington, United States. Michael Kutz, BS, Institute for Health Metrics and Evaluation, University of Washington, Seattle, Washington, United States. Hmwe H. Kyu, PhD, Institute for Health Metrics and Evaluation, University of Washington, Seattle, Washington, United States. Patrick Liu, BA, Institute for Health Metrics and Evaluation, University of Washington, Seattle, Washington, United States. Helen E. Olsen, MA, Institute for Health Metrics and Evaluation, University of Washington, Seattle, Washington, United States. Alison Smith, BA, Institute for Health Metrics and Evaluation, University of Washington, Seattle, Washington, United States. Jeffrey D. Stanaway, PhD, Institute for Health Metrics and Evaluation, University of Washington, Seattle, Washington, United States. Haidong Wang, PhD, Institute for Health Metrics and Evaluation, University of Washington, Seattle, Washington, United States. Johan Ärnlöv, PhD, Department of Neurobiology, Care Sciences and Society, Division of Family Medicine and Primary Care, Karolinska Institutet, Stockholm, Sweden; School of Health and Social Studies, Dalarna University, Falun, Sweden. Aliasghar Ahmad Kiadaliri, PhD, Department of Clinical Sciences Lund, Orthopedics, Clinical Epidemiology Unit, Lund University, Lund, Sweden. Khurshid Alam, PhD, Murdoch Childrens Research Institute, The University of Melbourne, Parkville, Victoria, Australia; The University of Melbourne, Melbourne, VIC, Australia; The University of Sydney, Sydney, NSW, Australia. Deena Alasfoor, MSc, Ministry of Health, Al Khuwair, Muscat, Oman. Raghid Ali MSc, University of Oxford, Oxford, United Kingdom. Reza Alizadeh-Navaei, PhD, Gastrointestinal Cancer Research Center, Mazandaran University of Medical Sciences, Sari, Mazandaran, Iran. Rajaa Al-Raddadi, PhD, Joint Program of Family and Community Medicine, Jeddah, Makkah, Saudi Arabia. Khalid A. Altirkawi, MD, King Saud University, Riyadh, Saudi Arabia. Nelson Alvis-Guzman, PhD, Universidad de Cartagena, Cartagena de Indias, Colombia. Nahla Anber, PhD, Mansoura University, Mansoura, Egypt. Carl Abelardo T. Antonio, MD, Department of Health Policy and Administration, College of Public Health, University of the Philippines Manila, Manila, Philippines. Palwasha Anwari, MD, Self-employed, Kabul, Afghanistan. Al Artaman, PhD, University of Manitoba, Winnipeg, Manitoba, Canada. Hamid Asayesh, PhD, Department of Medical Emergency, School of Paramedic, Qom University of Medical Sciences, Qom, Iran. Suzanne L. Barker-Collo, PhD, School of Psychology, University of Auckland, Auckland, New Zealand. Neeraj Bedi, MD, College of Public Health and Tropical Medicine, Jazan, Saudi Arabia. Ettore

- Beghi, MD, IRCCS - Istituto di Ricerche Farmacologiche Mario Negri, Milan, Italy. Derrick A. Bennett, PhD, Nuffield Department of Population Health, University of Oxford, Oxford, United Kingdom. Isabela M. Bensenor, PhD, University of São Paulo, São Paulo, Brazil. Zulfiqar A. Bhutta, PhD, Centre of Excellence in Women and Child Health, Aga Khan University, Karachi, Pakistan; Centre for Global Child Health, The Hospital for Sick Children, Toronto, ON, Canada. Zahid A. Butt, PhD, Al Shifa Trust Eye Hospital, Rawalpindi, Pakistan. Carlos A. Castañeda-Orjuela, MSc, Colombian National Health Observatory, Instituto Nacional de Salud, Bogota, DC, Colombia; Epidemiology and Public Health Evaluation Group, Public Health Department, Universidad Nacional de Colombia, Bogota, Colombia. Ferrán Catalá-López, PhD, Department of Medicine, University of Valencia/INCLIVA Health Research Institute and CIBERSAM, Valencia, Spain; Clinical Epidemiology Program, Ottawa Hospital Research Institute, Ottawa, Canada. Fiona J. Charlson, PhD, School of Public Health, University of Queensland, Brisbane, Queensland, Australia; Institute for Health Metrics and Evaluation, University of Washington, Seattle, Washington, United States; Queensland Centre for Mental Health Research, Brisbane, Queensland, Australia. Hadi Danawi, PhD, Walden University, Minneapolis, Minnesota, United States. Diego De Leo, DSc, Griffith University, Brisbane, Queensland, Australia. Louisa Degenhardt, PhD, National Drug and Alcohol Research Centre, University of New South Wales, Sydney, Australia. Donna Denno, MD, Department of Pediatrics, University of Washington, Seattle, Washington, United States; Department of Global Health, University of Washington, Seattle, Washington. Kebede Deribe, MPH, Brighton and Sussex Medical School, Brighton, United Kingdom; School of Public Health, Addis Ababa University, Addis Ababa, Ethiopia. Don C. Des Jarlais, PhD, Mount Sinai Beth Israel, New York, New York, United States; Icahn School of Medicine at Mount Sinai, New York City, New York, United States. Subhojit Dey, PhD, Indian Institute of Public Health-Delhi, Public Health Foundation of India, Gurgaon, India. Samath D. Dharmaratne, MD, Department of Community Medicine, Faculty of Medicine, University of Peradeniya, Peradeniya, Sri Lanka. Shirin Djalalinia, PhD, Undersecretary for Research & Technology, Ministry of Health & Medical Education, Tehran, Iran. Holly E. Erskine, PhD, Queensland Centre for Mental Health Research, Brisbane, QLD, Australia; School of Public Health, University of Queensland, Brisbane, QLD, Australia; Institute for Health Metrics and Evaluation, University of Washington, Seattle, Washington, United States. Seyed-Mohammad Fereshhtehnejad, PhD, Department of Neurobiology, Care Sciences and Society (NVS), Karolinska Institutet, Stockholm, Sweden. Alize J. Ferrari, PhD, School of Public Health, University of Queensland, Brisbane, Queensland, Australia; Queensland Centre for Mental Health Research, Brisbane, Queensland, Australia; Institute for Health Metrics and Evaluation, University of Washington, Seattle, Washington, United States. Florian Fischer, PhD, School of Public Health, Bielefeld University, Bielefeld, Germany. Tsegaye Tewelde Gebrehiwot, MPH, Jimma University, Jimma, Ethiopia. Johanna M. Geleijnse, PhD, Division of Human Nutrition, Wageningen University, Wageningen, Netherlands. Philimon N. Gona, PhD, University of Massachusetts Boston, Boston, Massachusetts, United States. Harish Chander Gugnani, PhD, Departments of Microbiology and Epidemiology & Biostatistics, Saint James School of Medicine, The Quarter, Anguilla. Rajeev Gupta, PhD, Eternal Heart Care Centre and Research Institute, Jaipur, Rajasthan, India. Randah Ribhi Hamadeh, DPhil, Arabian Gulf University, Manama, Bahrain. Samer Hamidi, DrPH, Hamdan Bin Mohammed Smart University, Dubai, United Arab Emirates. Josep Maria Haro, MD, Parc Sanitari Sant Joan de Déu - CIBERSAM, Sant Boi de Llobregat, Spain. Roderick J. Hay, DM, International Foundation for Dermatology, London, United Kingdom; King's College London, London, United Kingdom. Stephen J. C. Hearps, PGDipBiostat, Child Neuropsychology, Murdoch Childrens Research Hospital, Parkville, VIC, Australia. Delia Hendrie, MA, Centre for Population Health Research, Curtin University, Bentley, WA, Australia. Peter J. Hotez, PhD, College of Medicine, Baylor University, Houston, Texas, United States. Guoqing Hu, PhD, Department of Epidemiology and Health Statistics, School of Public Health, Central South University, Changsha, Hunan, China. Jost B. Jonas, MD, Department of Ophthalmology, Medical Faculty Mannheim, Ruprecht-Karls-University Heidelberg, Mannheim, Germany. André Karch, MD, Epidemiological and Statistical Methods Research Group, Helmholtz Centre for Infection Research, Braunschweig, Germany; Hannover-Braunschweig Site, German Center for Infection Research, Braunschweig, Germany. Seyed M. Karimi, PhD, University of Washington Tacoma, Tacoma, WA, United States. Amir Kasaeian, PhD, Hematology-Oncology and Stem Cell Transplantation Research Center, Tehran University of Medical Sciences, Tehran, Iran; Endocrinology and Metabolism Population Sciences Institute, Tehran University of Medical Sciences, Tehran, Iran. Seifu Kebede, MS, Mekelle University, Mekele, Ethiopia. Andre Pascal Kengne, PhD, South African Medical Research Council, Cape Town, South Africa; University of Cape Town, Cape Town, South Africa. Ejaz Ahmad Khan, MD, Health Services Academy, Islamabad, Pakistan. Ardeshir Khosravi, PhD, Iranian Ministry of Health and Medical Education, Tehran, Iran; Non-communicable Diseases Research Center, Tehran University of Medical Sciences, Tehran, Iran. Jagdish Khubchandani, PhD, Department of Nutrition and Health Science, Ball State University, Muncie, Indiana, United States. Yoshihiro Kokubo, PhD, Department of Preventive Cardiology, National Cerebral and Cardiovascular Center, Suita, Japan. Jacek A. Kopec, PhD, University of British Columbia, Vancouver, BC, Canada. Soewarta Kosen, MD, Center for Community Empowerment, Health Policy and Humanities, National Institute of Health Research & Development, Jakarta, Daerah Khusus Ibukota (DKI) Jakarta, Indonesia. Heidi J. Larson, PhD, Department of Infectious Disease Epidemiology, London School of Hygiene & Tropical Medicine, London, United Kingdom; Institute for Health Metrics and Evaluation, University of Washington, Seattle, Washington, United States. Anders Larsson, PhD, Department of Medical Sciences, Uppsala University, Uppsala, Sweden. Janet L. Leasher, OD, College of Optometry, Nova Southeastern University, Fort Lauderdale, Florida, United States. Janni Leung, PhD, School of Public Health, University of Queensland, Brisbane, QLD, Australia; University of Washington, Seattle, Washington, United States. Yongmei Li, PhD, San Francisco VA Medical Center, San Francisco, California, United States. Paulo A. Lotufo, DrPH, University of São Paulo, São Paulo, Brazil. Raimundas Lunevicius, PhD, Aintree University Hospital National Health Service Foundation Trust, Liverpool, United Kingdom; School of Medicine, University of Liverpool, Liverpool, United Kingdom. Hassan Magdy Abd El Razek, MBChB, Mansoura Faculty of Medicine, Mansoura, Egypt. Reza Majdzadeh, PhD, Knowledge Utilization Research Center and Community Based Participatory Research Center, Tehran University of Medical Sciences, Tehran, Iran. Azeem Majeed, MD, Department of Primary Care & Public Health, Imperial College London, London, England, United Kingdom. Peter Memiah, PhD, University of West Florida, Pensacola, FL, United States. Ziad A. Memish, MD, Saudi Ministry of Health, Riyadh, Saudi Arabia; College of Medicine, Alfaisal University, Riyadh, Saudi Arabia. Walter Mendoza, MD, United Nations Population Fund, Lima, Peru. Francis Apolinary Mhimbira, MS, Ifakara Health Institute, Bagamoyo, Tanzania. Ted R. Miller, PhD, Pacific Institute for Research & Evaluation, Calverton, MD, United States; Centre for Population Health, Curtin University, Perth, WA, Australia. Philip B. Mitchell, MD, University of New South Wales, Kensington, New South Wales, Australia. Lorenzo Monasta, DSc, Institute for Maternal and Child Health, IRCCS "Burlo Garofolo", Trieste, Italy. Carla Makhlof Obermeyer, DSc, Center for Research on Population and Health, Faculty of Health Sciences, American University of Beirut, Beirut, Lebanon. In-Hwan Oh, PhD, Department of Preventive Medicine,

School of Medicine, Kyung Hee University, Seoul, South Korea. Bolajoko Olubukunola Olusanya, PhD, Center for Healthy Start Initiative, Lagos, Nigeria. Alberto Ortiz PhD, IIS-Fundacion Jimenez Diaz-UAM, Madrid, Spain. Eun-Kee Park, PhD, Department of Medical Humanities and Social Medicine, College of Medicine, Kosin University, Busan, South Korea. Matti Parry, MD, Reproductive Health and Research/Adolescents and at-risk populations (RHR/AGH), World Health Organization, Geneva, Switzerland. David M. Pereira, PhD, REQUIMTE/LAQV, Laboratório de Farmacognosia, Departamento de Química, Faculdade de Farmácia, Universidade do Porto, Porto, Portugal. Michael Robert Phillips, MD, Shanghai Jiao Tong University School of Medicine, Shanghai, China; Emory University, Atlanta, Georgia, United States. Farshad Pourmalek, PhD, University of British Columbia, Vancouver, British Columbia, Canada. Mostafa Qorbani, PhD, Non-communicable Diseases Research Center, Alborz University of Medical Sciences, Karaj, Iran. Amir Radfar, MD, A T Still University, Kirksville, MO, United States. Anwar Rafay, MS, Contech International Health Consultants, Lahore, Pakistan; Contech School of Public Health, Lahore, Pakistan. Vafa Rahimi-Movaghar, MD, Sina Trauma and Surgery Research Center, Tehran University of Medical Sciences, Tehran, Iran. Rajesh Kumar Rai, MPH, Society for Health and Demographic Surveillance, Suri, India. Saleem M. Rana, PhD, Contech School of Public Health, Lahore, Punjab, Pakistan; Contech International Health Consultants, Lahore, Pakistan. David Laith Rawaf, MD, WHO Collaborating Centre, Imperial College London, London, United Kingdom; North Hampshire Hospitals, Basingstoke, United Kingdom; University College London Hospitals, London, United Kingdom. Salman Rawaf, MD, Imperial College London, London, United Kingdom. Nicola Reavley, PhD, Melbourne School of Population and Global Health, The University of Melbourne, Melbourne, VIC, Australia. Andre M. N. Renzaho, PhD, Western Sydney University, Penrith, NSW, Australia. Satar Rezaei, PhD, School of Public Health, Kermanshah University of Medical Sciences, Kermanshah, Iran. Mohammad Sadegh-Rezai, MD, Infectious Diseases Research Centre with Focus on Nosocomial Infection, Mazandaran University of Medical Sciences, Sari, Iran. Diego Rios-Zertuche, MPA, Salud Mesoamerica 2015 Initiative, Panama, Panama. Gholamreza Roshandel, PhD, Golestan Research Center of Gastroenterology and Hepatology, Golestan University of Medical Sciences, Gorgan, Iran; Digestive Diseases Research Institute, Tehran University of Medical Sciences, Tehran, Iran. Dietrich Rothenbacher, MD, Institute of Epidemiology and Medical Biometry, Ulm University, Ulm, Germany. Mahdi Safdarian, MD, Sina Trauma & Surgery Research Center, Tehran University of Medical Sciences, Tehran, Iran. Sare Safi, MS, Ophthalmic Epidemiology Research Center, Shahid Beheshti University of Medical Sciences, Tehran, Iran. Saeid Safiri, PhD, Managerial Epidemiology Research Center, Department of Public Health, School of Nursing and Midwifery, Maragheh University of Medical Sciences, Maragheh, Iran. Mohammad Ali Sahraian, MD, MS Research Center, Neuroscience Institute, Tehran University of Medical Sciences, Tehran, Iran. Payman Salamati, MD, Sina Trauma and Surgery Research Center, Tehran University of Medical Sciences, Tehran, Iran. Abdallah M. Samy, PhD, Ain Shams University, Cairo, Egypt. Juan Ramon Sanabria, MD, J Edwards School of Medicine, Marshall University, Huntington, WV, United States; Case Western Reserve University, Cleveland, OH, United States. Damian Santomauro, PhD, School of Public Health, University of Queensland, Brisbane, Queensland, Australia; Queensland Centre for Mental Health Research, Brisbane, Queensland, Australia; Institute for Health Metrics and Evaluation, University of Washington, Seattle, Washington, United States. Benn Sartorius, PhD, Public Health Medicine, School of Nursing and Public Health, University of KwaZulu-Natal, Durban, South Africa; UKZN Gastrointestinal Cancer Research Centre, South African Medical Research Council (SAMRC), Durban, South Africa. David C. Schwebel, PhD, University of Alabama at Birmingham, Birmingham, Alabama, United States. Soraya Seedat, PhD, Stellenbosch University, Cape Town, South Africa. Sadaf G. Sepanlou, PhD, Digestive Diseases Research Institute, Tehran University of Medical Sciences, Tehran, Iran. Tesfaye Setegn, MPH, Bahir Dar University, Bahir Dar, Ethiopia. Amira Shaheen, PhD, Department of Public Health, An-Najah University, Nablus, Palestine. Masood Ali Shaikh, MD, Independent Consultant, Karachi, Pakistan. Rahman Shiri, PhD, Finnish Institute of Occupational Health, Work Organizations, Work Disability Program, Department of Public Health, Faculty of Medicine, University of Helsinki, Helsinki, Finland. Inga Dora Sigfusdottir, PhD, Reykjavik University, Reykjavik, Iceland. Jasvinder A. Singh, MD, University of Alabama at Birmingham and Birmingham Veterans Affairs Medical Center, Birmingham, Alabama, United States. Badr H. A. Sobaih, MD, King Saud University, Riyadh, Saudi Arabia. Chandrashekar T. Sreeramareddy, MD, Department of Community Medicine, International Medical University, Kuala Lumpur, Malaysia. Rizwan Suliankatchi Abdulkader, MD, Ministry of Health, Kingdom of Saudi Arabia, Riyadh, Saudi Arabia. Arash Tehrani-Banihashemi, PhD, Preventive Medicine and Public Health Research Center, Iran University of Medical Sciences, Tehran, Iran. Mohamad-Hani Temsah, MD, King Saud University, Riyadh, Saudi Arabia. Abdullah Sulieman Terkawi, MD, Department of Anesthesiology, University of Virginia, Charlottesville, VA, United States; Department of Anesthesiology, King Fahad Medical City, Riyadh, Saudi Arabia; Outcomes Research Consortium, Cleveland Clinic, Cleveland, OH, United States. Alan J. Thomson, PhD, Adaptive Knowledge Management, Victoria, BC, Canada. Marcello Tonelli, MD, University of Calgary, Calgary, Alberta, Canada. Roman Topor-Madry, PhD, Institute of Public Health, Faculty of Health Sciences, Jagiellonian University Medical College, Kraków, Poland; Faculty of Health Sciences, Wrocław Medical University, Wrocław, Poland. Bach Xuan Tran, PhD, Johns Hopkins University, Baltimore, Maryland, United States; Hanoi Medical University, Hanoi, Vietnam. Kingsley Nnanna Ukwaja, MD, Department of Internal Medicine, Federal Teaching Hospital, Abakaliki, Nigeria. Olalekan A. Uthman, PhD, Warwick Medical School, University of Warwick, Coventry, United Kingdom. Tommi Vasankari, PhD, UKK Institute for Health Promotion Research, Tampere, Finland. Narayanaswamy Venkatasubramanian, MBBS, Raffles Neuroscience Centre, Raffles Hospital, Singapore, Singapore. Vasily Victorovich Vlassov, MD, National Research University Higher School of Economics, Moscow, Russia. Stein Emil Vollset, DrPH, Center for Disease Burden, Norwegian Institute of Public Health, Bergen, Norway; Department of Global Public Health and Primary Care, University of Bergen, Bergen, Norway; Institute for Health Metrics and Evaluation, University of Washington, Seattle, Washington, United States. Elisabete Weiderpass, PhD, Department of Medical Epidemiology and Biostatistics, Karolinska Institutet, Stockholm, Sweden; Department of Research, Cancer Registry of Norway, Institute of Population-Based Cancer Research, Oslo, Norway; Department of Community Medicine, Faculty of Health Sciences, University of Tromsø, The Arctic University of Norway, Tromsø, Norway; Genetic Epidemiology Group, Folkhälsan Research Center, Helsinki, Finland. Robert G. Weintraub, MBBS, Royal Children's Hospital, Melbourne, VIC, Australia; The University of Melbourne, Melbourne, VIC, Australia; Murdoch Children's Research Institute, Melbourne, VIC, Australia. Andrea Werdecker, PhD, Competence Centre Mortality-Follow-Up of the German National Cohort, Federal Institute for Population Research, Wiesbaden, Germany. Harvey A. Whiteford, PhD, School of Public Health, University of Queensland, Brisbane, Queensland, Australia; Queensland Centre for Mental Health Research, Brisbane, Queensland, Australia; Institute for Health Metrics and Evaluation, University of Washington, Seattle, United States. Yuichiro Yano, MD, Department of Preventive Medicine, Northwestern University, Chicago, Illinois, United States. Mehdi Yaseri, PhD, Tehran University of Medical Sciences, Tehran, Iran; Ophthalmic Research Center,

Shahid Beheshti University of Medical Sciences, Tehran, Iran. Naohiro Yonemoto, MPH, Department of Biostatistics, School of Public Health, Kyoto University, Kyoto, Japan. Mustafa Z. Younis, DrPH, Jackson State University, Jackson, MS, United States. Chuanhua Yu, PhD, Department of Epidemiology and Biostatistics, School of Public Health, Wuhan University, Wuhan, China; Global Health Institute, Wuhan University, Wuhan, China. Aisha O. Jumaan, PhD, Independent Consultant, Seattle, Washington, United States. Theo Vos, PhD, Institute for Health Metrics and Evaluation, University of Washington, Seattle, Washington, United States. Simon I. Hay, DSc, Oxford Big Data Institute, Li Ka Shing Centre for Health Information and Discovery, University of Oxford, Oxford, United Kingdom; Institute for Health Metrics and Evaluation, University of Washington, Seattle, Washington, United States. Mohsen Naghavi, PhD, Institute for Health Metrics and Evaluation, University of Washington, Seattle, Washington, United States. George C. Patton, MD, Murdoch Childrens Research Institute, Department of Paediatrics, University of Melbourne, Melbourne, Victoria, Australia. Christopher J. L. Murray, DPhil, Institute for Health Metrics and Evaluation, University of Washington, Seattle, Washington, United States. Ali H. Mokdad, PhD, Institute for Health Metrics and Evaluation, University of Washington, Seattle, Washington, United States.

Compliance with ethical standards

This manuscript reflects original work that has not previously been published in whole or in part and is not under consideration elsewhere. All authors have read the manuscript and have agreed that the work is ready for submission and accept responsibility for its contents. The authors of this paper have complied with all ethical standards and do not have any conflicts of interest to disclose at the time of submission. The funding source played no role in the design of the study, the analysis and interpretation of data, and the writing of the paper. The study did not involve human participants and/or animals; therefore, no informed consent was needed.

Conflict of interest The authors declare that they have no conflicts of interest at this time.

Funding statement GBD 2015 is funded by Bill & Melinda Gates Foundation.

Open Access This article is distributed under the terms of the Creative Commons Attribution 4.0 International License (<http://creativecommons.org/licenses/by/4.0/>), which permits unrestricted use, distribution, and reproduction in any medium, provided you give appropriate credit to the original author(s) and the source, provide a link to the Creative Commons license, and indicate if changes were made.

References

- Alaovie A, Ali A, Afifi R, Coalition AYH (2017) Arab youth respond to the Lancet Commission on Adolescent Health and Wellbeing. *Lancet* 389:1964–1965
- Blair I, Grivna M, Sharif AA (2014) The “Arab World” is not a useful concept when addressing challenges to public health. *Public Health Educ Res Middle East Front Public Health* 2:30. doi:10.3389/fpubh.2014.00030
- Cole TJ, Lobstein T (2012) Extended international (IOTF) body mass index cut-offs for thinness, overweight and obesity. *Pediatric obesity* 7:284–294. doi:10.1111/j.2047-6310.2012.00064.x
- Franks PW, Hanson RL, Knowler WC, Sievers ML, Bennett PH, Looker HC (2010) Childhood obesity, other cardiovascular risk

- factors, and premature death. *N Engl J Med* 362:485–493. doi:10.1056/NEJMoa0904130
- GBD DALYs Hale Collaborators (2016) Global, regional, and national disability-adjusted life-years (DALYs) for 315 diseases and injuries and healthy life expectancy (HALE), 1990–2015: a systematic analysis for the Global Burden of Disease Study 2015. *Lancet* 388:1603–1658. doi:10.1016/S0140-6736(16)31460-X
- GBD Disease Injury Incidence and Prevalence Collaborators (2016) Global, regional, and national incidence, prevalence, and years lived with disability for 310 diseases and injuries, 1990–2015: a systematic analysis for the global burden of disease study 2015. *Lancet* 388:1545–1602. doi:10.1016/S0140-6736(16)31678-6
- GBD Mortality and Causes of Death Collaborators (2016) Global, regional, and national life expectancy, all-cause mortality, and cause-specific mortality for 249 causes of death, 1980–2015: a systematic analysis for the global burden of disease study 2015. *Lancet* 388:1459–1544. doi:10.1016/S0140-6736(16)31012-1
- Gbd SDG Collaborators (2016) Measuring the health-related sustainable development goals in 188 countries: a baseline analysis from the global burden of disease study 2015. *Lancet*. doi:10.1016/S0140-6736(16)31467-2
- GBD Tobacco Collaborators (2017) Smoking prevalence and attributable disease burden in 195 countries and territories, 1990–2015: a systematic analysis from the global burden of disease study 2015. *Lancet*. doi:10.1016/S0140-6736(17)30819-X
- GBD 2015 Eastern Mediterranean Region Cardiovascular Disease Collaborators, Mokdad AH (2017) Burden of cardiovascular diseases in the Eastern Mediterranean Region, 1990–2015: findings from the global burden of disease 2015 study. *Int J Public Health*. doi:10.1007/s00038-017-1012-3
- GBD 2015 Eastern Mediterranean Region Collaborators, Mokdad AH (2017) Danger ahead: the burden of diseases, injuries, and risk factors in the Eastern Mediterranean Region, 1990–2015. *Int J Public Health*. doi:10.1007/s00038-017-1017-y
- GBD 2015 Eastern Mediterranean Region HIV/AIDS Collaborators, Mokdad AH (2017) Trends in HIV/AIDS morbidity and mortality in Eastern Mediterranean countries, 1990–2015: findings from the global burden of disease 2015 study. *Int J Public Health*. doi:10.1007/s00038-017-1023-0
- GBD 2015 Eastern Mediterranean Region Intentional Injuries Collaborators, Mokdad AH (2017) Intentional injuries in the Eastern Mediterranean Region, 1990–2015: findings from the global burden of disease 2015 study. *Int J Public Health*. doi:10.1007/s00038-017-1005-2
- GBD 2015 Eastern Mediterranean Region Mental Health Collaborators, Mokdad AH (2017) The burden of mental disorders in the Eastern Mediterranean Region, 1990–2015: findings from the global burden of disease study 2015. *Int J Public Health*. doi:10.1007/s00038-017-1006-1
- Mandil A, Chaaya M, Saab D (2013) Health status, epidemiological profile and prospects: Eastern Mediterranean region. *Int J Epidemiol* 42:616–626. doi:10.1093/ije/dyt026
- Maziak W, Ward KD, Afifi Soweid RA, Eissenberg T (2004) Tobacco smoking using a waterpipe: a re-emerging strain in a global epidemic. *Tob Control* 13:327–333. doi:10.1136/tc.2004.008169
- Mokdad AH, Jaber S, Abdel Aziz MI et al (2014) The state of health in the Arab world, 1990–2010: an analysis of the burden of diseases, injuries, and risk factors. *Lancet* 383:309–320. doi:10.1016/S0140-6736(13)62189-3
- Mokdad AH, Forouzanfar MH, Dauod F et al (2016a) Health in times of uncertainty in the eastern Mediterranean region, 1990–2013: a systematic analysis for the Global Burden of Disease Study 2013. *Lancet Glob Health* 4:e704–e713. doi:10.1016/S2214-109X(16)30168-1

- Mokdad AH, Forouzanfar MH, Dauod F et al (2016b) Global burden of diseases, injuries, and risk factors for young people's health during 1990–2013: a systematic analysis for the global burden of disease study 2013. *Lancet* 387:2383–2401. doi:[10.1016/S0140-6736\(16\)00648-6](https://doi.org/10.1016/S0140-6736(16)00648-6)
- Patton GC, Coffey C, Cappa C et al (2012) Health of the world's adolescents: a synthesis of internationally comparable data. *Lancet* 379:1665–1675 (S0140-6736(12)60203-7 [pii])
- Patton GC, Sawyer SM, Santelli JS et al (2016) Our future: a Lancet commission on adolescent health and wellbeing. *Lancet* 387:2423–2478. doi:[10.1016/S0140-6736\(16\)00579-1](https://doi.org/10.1016/S0140-6736(16)00579-1)
- Sawyer SM, Afifi RA, Bearinger LH, Blakemore SJ, Dick B, Ezech AC, Patton GC (2012) Adolescence: a foundation for future health. *Lancet* 379:1630–1640. doi:[10.1016/S0140-6736\(12\)60072-5](https://doi.org/10.1016/S0140-6736(12)60072-5)
- The Global Burden of Disease Child and Adolescent Health Collaboration (2017) Child and adolescent health from 1990 to 2015: findings from the global burden of diseases, injuries, and risk factors 2015 study. *JAMA Pediatr*. doi:[10.1001/jamapediatrics.2017.0250](https://doi.org/10.1001/jamapediatrics.2017.0250)
- The World Bank (2006) Development and the next generation. <http://documents.worldbank.org/curated/en/556251468128407787/pdf/359990WDR0complete.pdf>. Accessed 12 Jul 2017
- Tylee A, Haller DM, Graham T, Churchill R, Sanci LA (2007) Youth-friendly primary-care services: how are we doing and what more needs to be done? *Lancet* 369:1565–1573 (S0140-6736(07)60371-7 [pii])
- UNICEF (2016a) Female genital mutilation/cutting: a global concern. https://www.unicef.org/media/files/FGMC_2016_brochure_final_UNICEF_SPREAD.pdf. Accessed 12 Jul 2017
- UNICEF (2016b) Good practices in adolescent and youth programming. https://goodpracticessite.files.wordpress.com/2016/03/1-good-practices_compressed1.pdf. Accessed 12 Jul 2017
- United Nations Inter-Agency Technical Task Team on Young People [UN IATTTYP] (2015) Regional framework of joint strategic actions for young people in the Arab States and Middle East and North Africa region. http://documents.wfp.org/stellent/groups/public/documents/op_reports/wfp282333.pdf. Accessed 12 Jul 2017
- Viner RM, Ozer EM, Denny S, Marmot M, Resnick M, Fatusi A, Currie C (2012) Adolescence and the social determinants of health. *Lancet* 379:1641–1652. doi:[10.1016/S0140-6736\(12\)60149-4](https://doi.org/10.1016/S0140-6736(12)60149-4)
- WHO (2017a) Global accelerated action for the health of adolescents (AA-HA!): guidance to support country implementation. <http://apps.who.int/iris/bitstream/10665/255415/1/9789241512343-eng.pdf?ua=1>. Accessed 12 Jul 2017
- WHO (2017b) WHO regional office for the Eastern Mediterranean. <http://www.emro.who.int/entity/about-us/index.html>. Accessed 12 Jul 2017

Electronic Supplementary Material

Article title:

Adolescent health in the Eastern Mediterranean Region: Findings from the Global Burden of Disease 2015 Study

Journal:

International Journal of Public Health

Authors:

GBD 2015 Eastern Mediterranean Region Adolescent Health Collaborators

Corresponding author:

Ali H. Mokdad

Institute for Health Metrics and Evaluation, University of Washington, Seattle, WA, United States

Email: mokdaa@uw.edu

e-Figure 1 - All-cause rates of poor health (mortality, years lost due to disability(YLD) and disability-adjusted life-years (DALYs)) for adolescents in the Eastern Mediterranean Region, 1990-2015. (Global Burden of Disease Study 2015, Eastern Mediterranean Region, 1990-2015).

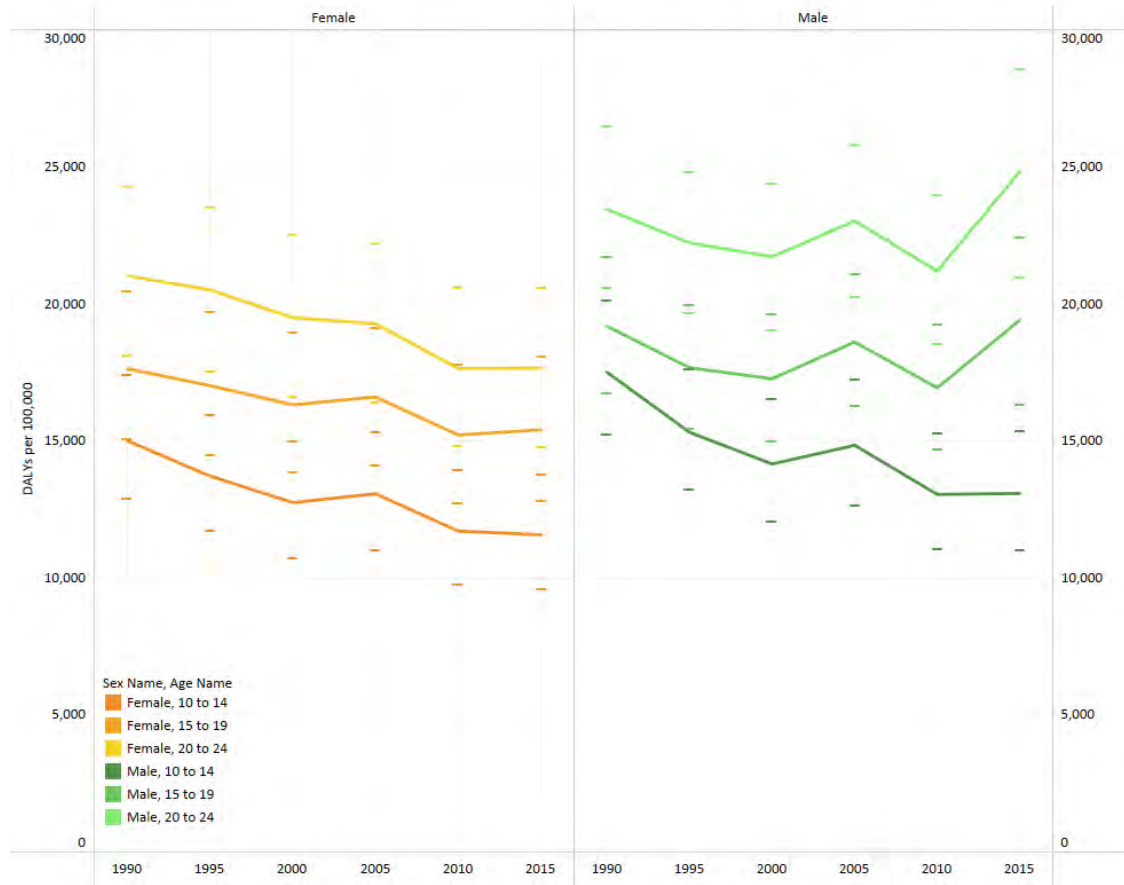
Panel A - All-cause mortality rate (per 100,000) and 95% uncertainty for males and females in the Eastern Mediterranean Region.



Panel B - All-cause YLDs rate (per 100,000) and 95% uncertainty in the Eastern Mediterranean Region, by sex, 1990-2015.

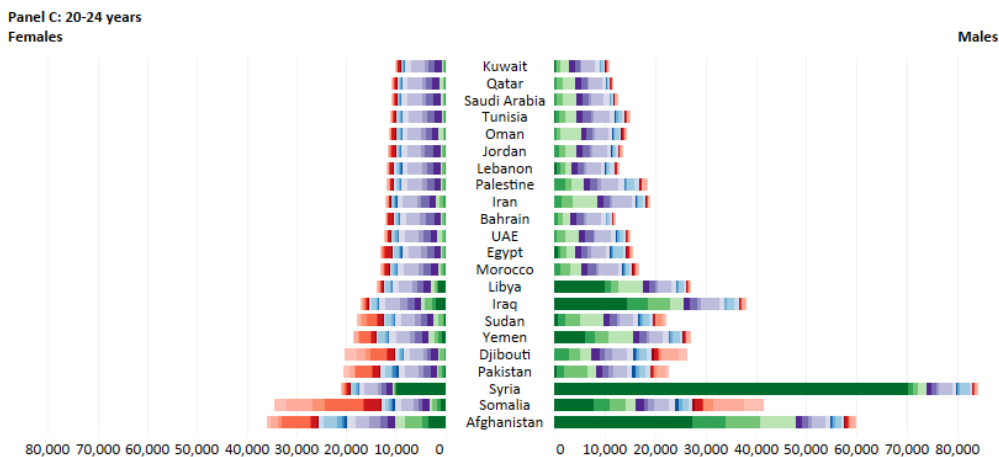
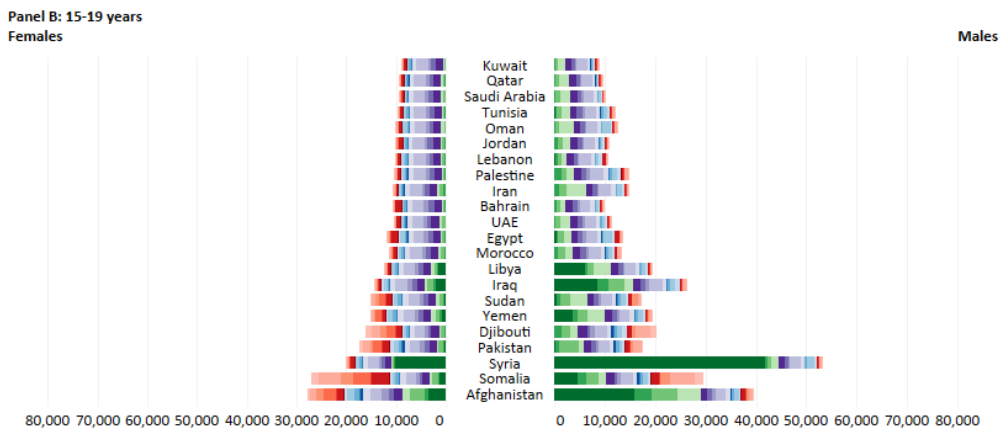
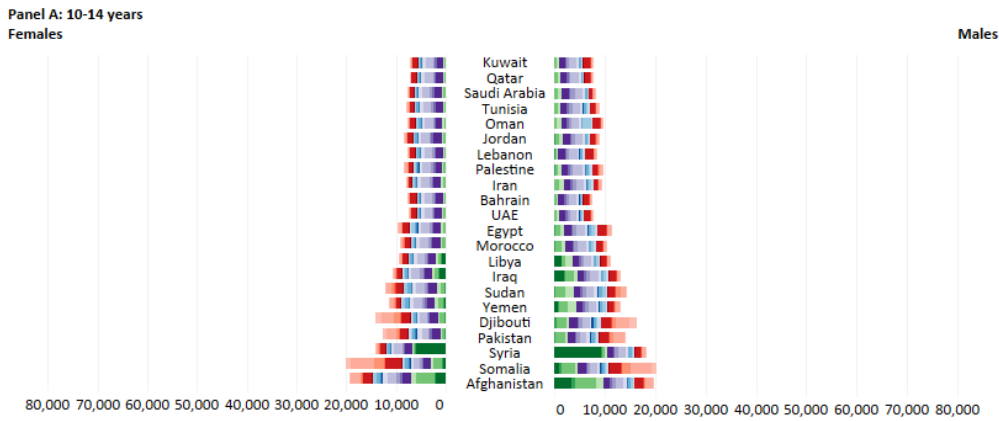


Panel C - All-cause DALYs rate (per 100,000) and 95% uncertainty in the Eastern Mediterranean Region, by sex, 1990-2015.

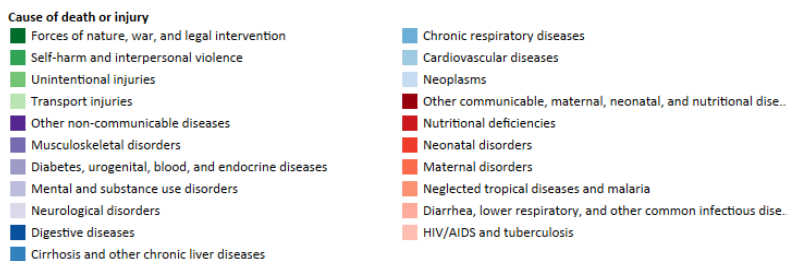


e-Figure 2 - Observed & expected disability-adjusted life-years(DALYs) for countries in the Eastern Mediterranean Region, by age and gender, in 2015. DALYs = Disability-adjusted life-years. (Global Burden of Disease Study 2015, Eastern Mediterranean Countries, 2015).

Panel A to C - Observed cause-specific DALYs for countries in the Eastern Mediterranean Region by age group and gender.

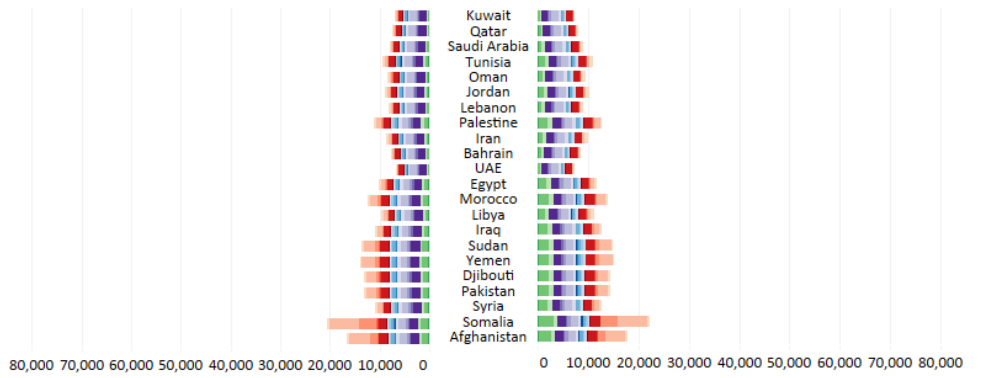


DALYs per 100,000

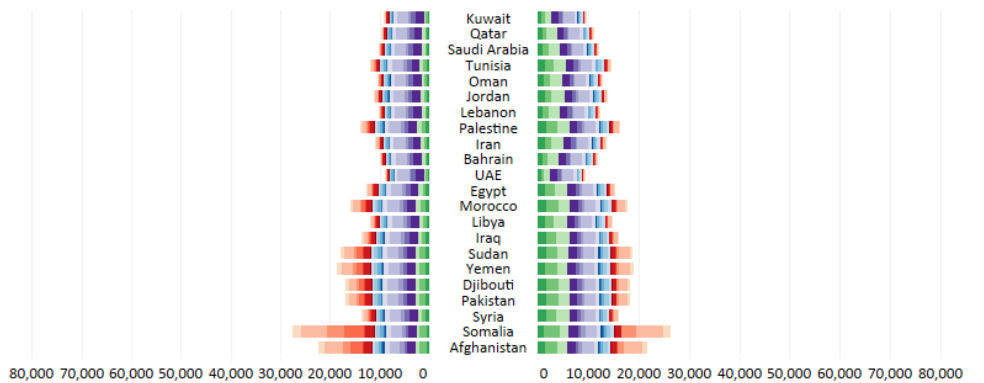


Panel D to F - Expected cause-specific DALYs for countries in the Eastern Mediterranean by age group and gender.

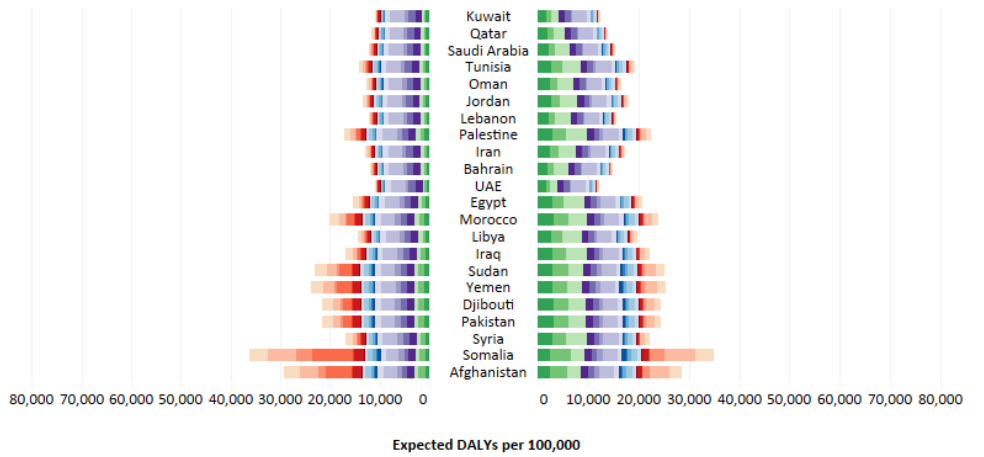
Panel D: 10-14 years
Females



Panel E: 15-19 years
Females



Panel F: 20-24 years
Females



- Cause of death or injury**
- Forces of nature, war, and legal intervention
 - Self-harm and interpersonal violence
 - Unintentional injuries
 - Transport injuries
 - Other non-communicable diseases
 - Musculoskeletal disorders
 - Diabetes, urogenital, blood, and endocrine diseases
 - Mental and substance use disorders
 - Neurological disorders
 - Digestive diseases
 - Cirrhosis and other chronic liver diseases
 - Chronic respiratory diseases
 - Cardiovascular diseases
 - Neoplasms
 - Other communicable, maternal, neonatal, and nutritional dise..
 - Nutritional deficiencies
 - Neonatal disorders
 - Maternal disorders
 - Neglected tropical diseases and malaria
 - Diarrhea, lower respiratory, and other common infective dise..
 - HIV/AIDS and tuberculosis

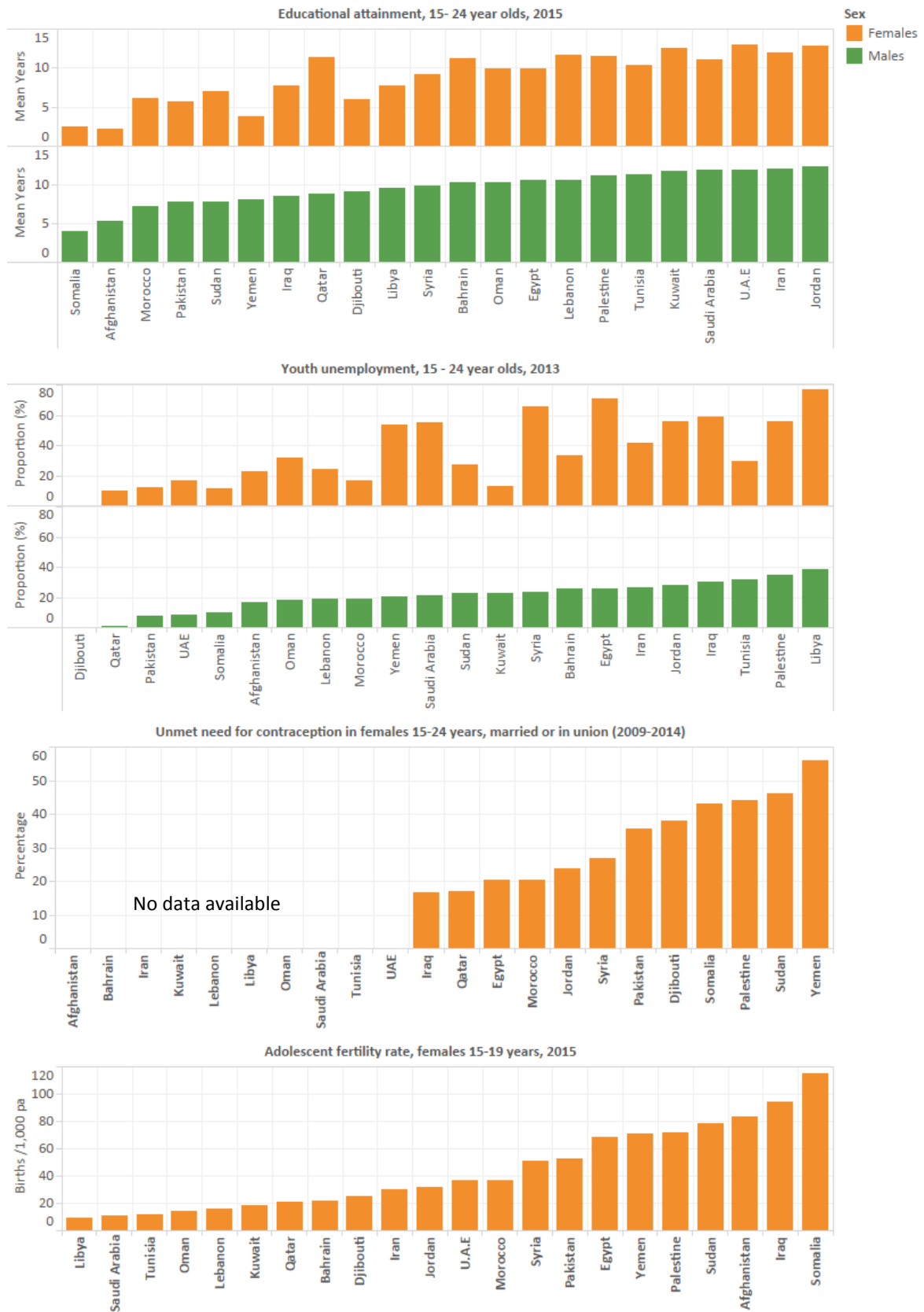
e-Figure 3 - Key health risks for adolescents in the Eastern Mediterranean Region, in 2015. (Global Burden of Disease Study 2015, Eastern Mediterranean Countries, 2015).

This figure shows the prevalence of daily tobacco smoking, overweight and obesity, and binge alcohol drinking for adolescents in the Eastern Mediterranean Region in 2015. For each risk, countries are ordered from lowest to greatest prevalence based on males.



e-Figure 4 - Key health determinants for adolescents in the Eastern Mediterranean Region, 1990-2015. (ILO, DHS, MICS, Global Burden of Disease Study 2015, Eastern Mediterranean Countries, 1990-2015).

This figure shows mean education attainment (data: GBD 2015), youth unemployment (data: ILO), unmet need for contraception (data: DHS and MICS) and adolescent fertility rate (data: GBD 2015). For each determinant, countries are ordered from lowest to greatest prevalence based on males.



Title: Adolescent health in the Eastern Mediterranean Region: Findings from the Global Burden of Disease 2015 Study

Group name: GBD 2015 Eastern Mediterranean Region Adolescent Health Collaborators

Prefix	First Name:	Middle Name:	Middle Name	Last Name:	Email Address	Highest deg of Department	Institution/Organization	Institution, Institution, Institution, Department	Institution/Organization 2	Institution, Institution, Institution, Department	Institution, Institution, Institution, Institution, Department	Institution, Institution, Institution, Institution, Department
Dr.	Peter			Azopardi	pete.azopardi@gmail.com	PhD	Burnet Institute	Melbourne VIC Australia		Wardliparingga Aboriginal Research Unit	Adelaide SA Australia	Murdoch C The Univer Victoria Australia South
Dr.	Karly			Cini	karly.cini@pmc1.edu.au		The University of Melbourne	Parkeville Victoria Australia				
Dr.	Eliasa			Kennedy	eliassa.kennedy@uq.edu.au		Murdoch Childrens Research Institute	Parkeville Victoria Australia				
Prof.	Susan			Sawyer	susan.sawyer@mq.edu.au		Murdoch Childrens Research Institute	Parkeville Victoria Australia				
Dr.	Charbel			El Bcheroui	charbel@uw.edu	PhD	Institute for Health Metrics and Evaluation	University of Washington			Seattle Washington United_States	
Dr.	Raghd			Charara	raghdic@gmail.com	MD	American University of Beirut	Beirut Lebanon			Seattle Washington United_States	
Dr.	Ibrahim			Khalil	ikhaili@uw.edu	MD	Institute for Health Metrics and Evaluation	University of Washington			Seattle Washington United_States	
Dr.	Maziar			Moradi-Lakeh	mazmoradi@gmail.com	MD	Department of Community Medicine, Preventative Medicine and Public Health Research	Tehran Iran			Seattle Washington United_States	
Mr.	Michael			Collison	mics14@uw.edu	BS	Institute for Health Metrics and Evaluation	University of Washington			Seattle Washington United_States	
Prof.	Rima	A		Affi	ra15@aub.edu.lb	PhD	American University of Beirut	Beirut Lebanon			Seattle Washington United_States	
Dr.	Jamela			Al-raiby	alraiby@who.int	MD	World Health Organization	Seattle Washington United_States				
Mr.	Kristopher	J.		Krohn	kkrohn1@uw.edu	BA	Institute for Health Metrics and Evaluation	University of Washington			Seattle Washington United_States	
Ms.	Farah			Daoud	farahd@uw.edu	BA/BS	Institute for Health Metrics and Evaluation	University of Washington				
Ms.	Adrienne			Chew	apchew@uw.edu	ND	Institute for Health Metrics and Evaluation	University of Washington			Seattle Washington United_States	
Dr.	Ashkan			Afshin	ashkan.afshin@gm	MD	Institute for Health Metrics and Evaluation	University of Washington			Seattle Washington United_States	
Dr.	Kyle	J.		Foreman	kfor@uw.edu	PhD	Institute for Health Metrics and Evaluation	University of Washington			Seattle Washington United_States	
Dr.	Nicholas			Kassebaum	nickkj@uw.edu	MD	Institute for Health Metrics and Evaluation	University of Washington			Seattle Washington United_States	Imperial College London London United_Kingdom
Mr.	Michael			Kutz	kutz13@uw.edu	BS	Institute for Health Metrics and Evaluation	University of Washington			Seattle Washington United_States	Seattle Children's Hospital Seattle Washington United_States
Dr.	Hmw			Kyu	hmwekyu@uw.edu	PhD	Institute for Health Metrics and Evaluation	University of Washington			Seattle Washington United_States	
Mr.	Patrick			Liu	pyliu@uw.edu	BA	Institute for Health Metrics and Evaluation	University of Washington			Seattle Washington United_States	
Ms.	Helen			Olsen	heolsen@uw.edu	MA	Institute for Health Metrics and Evaluation	University of Washington			Seattle Washington United_States	
Ms.	Alison			Smith	agcsmith@uw.edu	BA	Institute for Health Metrics and Evaluation	University of Washington			Seattle Washington United_States	
Dr.	Jeffrey			Stanaway	stanaway@uw.edu	PhD	Institute for Health Metrics and Evaluation	University of Washington			Seattle Washington United_States	
Dr.	Haidong			Wang	haidong@uw.edu	PhD	Institute for Health Metrics and Evaluation	University of Washington			Seattle Washington United_States	
Prof.	Johan			Årnölv	johan.arnolv@med	PhD	Department of Neurobiology, Care Sciences and Society, Division of Family Medicine and Primary Care	Karolinska Institutet Stockholm Sweden		School of H Dalarna University Falun Sweden		
Dr.	Aliasghar			Ahmad Kialaliri	aliasghar.ahmad_k	PhD	Department of Clinical Sciences Lund, Orthopedics, Clinical Epidemiology Unit	Lund University Lund Sweden				
Dr.	Khurshid			Alam	khurshid.bd@gmail	PhD	Murdoch Childrens Research Institute	The University of Melbourne Parkville Victoria Australia		The University of Melbourne	Melbourne VIC Australia	The Univer Sydney NSW Australia
Ms.	Deena			Alasfoor	deena.alasfoor@m	MSc		Ministry of Health Al Khuwair Muscat Oman				
Dr.	Raghib			Alli	raghib.ali@ndm.ox	FRCP		University of Oxford Oxford United_Kingdom				
Dr.	Reza			Alizadeh-Navaei	reza_nava@yahoo	PhD	Gastrointestinal Cancer Research Center	Mazandaran University of Medical Sciences Sari Mazandara Iran				
Dr.	Rajaa			Al-Raddadi	saudiresearcher@y	PhD	Joint Program of Family and Community Medicine	Jeddah Makkah Saudi_Arabia				
Dr.	Khalid	A.		Altirkawi	kaltirkawi@ksu.edu	MD	King Saud University	Riyadh Saudi_Arabia				
Prof.	Nelson			Alvis-Guzman	nalvis@yahoo.com	PhD	Universidad de Cartagena	Cartagena de Indias Colombia				
Dr.	Nahla			Anber	nahlanber@hotmail	PhD	Mansoura University	Mansoura Egypt				
Dr.	Carl Abelardo			Antonio	ctantonio@gmail	MD	Self-employed	University of the Philippines Manila Manila Philippines				
Dr.	Palwasha			Anwari	anwari222@gmail	MD	University of Manitoba	Winnipeg Manitoba Canada				
Dr.	Al			Artaman	alartaman@gmail	PhD	Qom University of Medical Sciences	Qom Iran				
Mr.	Hamid			Asayesh	asayeshpsy@gmail	PhD	School of Psychology	University of Auckland Auckland new_zealand				
Dr.	Suzanne	L.		Barker-Collo	s.barker-collo@auc	PhD	College of Public Health and Tropical Medicine	Jazan Saudi_Arabia				
Dr.	Neeraj			Bedi	drnbedi@yahoo.co	MD	IRCCS - Istituto di Ricerche Farmacologiche Mario Negri	Milan Italy				
Dr.	Ettore			Beghi	ettore.beghi@mari	MD	Nuffield Department of Population Health	University of Oxford Oxford United_Kingdom				
Dr.	Derrick	A.		Bennett	derrick.bennett@c	PhD	University of São Paulo	São Paulo São Paulo Brazil				
Dr.	Isabela			Bensenor	isabensenor@gmail	PhD	Centre of Excellence in Women and Child Health	Aga Khan University Karachi Pakistan		Centre for The Hospital for Sick Children Toronto ON Canada		
Dr.	Zuffiqar			Bhutta	zuffiqar.bhutta@ak	PhD	Al Shifa Trust Eye Hospital	Rawalpindi Punjab Pakistan				
Dr.	Zahid			Butt	zabut3@yahoo.co	PhD	Instituto Nacional de Salud	Bogota Bogota, DC Colombia		Epidemiologia y Salud Pública Bogota, DC Colombia		
Dr.	Carlos	A.		Castañeda-Orjuela	ccastanedao@ins.g	MSc	Colombian National Health Observatory	Bogota Bogota, DC Colombia				
Dr.	Ferrán			Catalá-López	ferran_catala@hot	PhD	Department of Medicine	University of Valencia/INCLIVA Health Research Institute and CIBERSAM	Valencia Spain	Clinical Epi-Ottawa Hospital Research Institute Ottawa Canada		
Dr.	Fiona	J		Charlson	fiona_charlson@qc	PhD	School of Public Health	University of Queensland Brisbane Queensland Australia		Institute for Health Metrics and Evaluation Seattle Washington United_States	Queensland Brisbane Queensland Australia	
Dr.	Hadi			Danawi	hdanawi@aol.com	PhD	Walden University	Minneapolis Minnesota United_States				
Prof.	Diego			De Leo	d.deleo@griffith.ec	DCSc	Griffith University	Brisbane Queensland Australia				
Prof.	Louisa			Degenhardt	l.degenhardt@unsw	PhD	National Drug and Alcohol Research Centre	University of New South Wales Sydney Australia				
Dr.	Donna			Denno	ddenno@uw.edu	MD	Department of Pediatrics	University of Washington			Seattle Washington United_States	Department of Pediatrics University of Washington Seattle Washington United_States
Mr.	Kebede			Deribe	kebededeka@yaho	MPH	Brighton and Sussex Medical School	Brighton United_Kingdom		School of P Addis Ababa University Addis Ababa Ethiopia		
Prof.	Don	C		Des Jarlais	desjarlais@chpne	PhD	Indian Institute of Public Health-Delhi, Public Health Foundation of India	New York New York United_States		Icahn School of Medicine at Mount Sin New York New York United_States		
Dr.	Subhojit			Dey	subhojit.dey@iip	PhD	Health Foundation of India	Gurgaon Haryana India				
Dr.	Samath	D.		Dharmaratne	samath62@yahoo	MD	Department of Community Medicine, Faculty of Medicine	University of Peradeniya Peradeniya Sri_Lanka				
Dr.	Shirin			Djalalinia	shdjalinia@gmail	PhD	Undersecretary for Research & Technology	Ministry of Health & Medical Education Tehran Tehran Iran				
Dr.	Holly			Erskine	holly_erskine@qcm	PhD	Queensland Centre for Mental Health Research	Brisbane QLD Australia		School of P University of Queensland Brisbane QLD Australia	Institute fo University (Seattle WA United_States)	
Dr.	Seyed-Mohammad			Fereshtehnejad	sm.fereshtehnejad	PhD	Department of Neurobiology, Care Sciences and Society (NVS)	Karolinska Institutet Stockholm Sweden				
Dr.	Alize	J.		Ferrari	alize_ferrari@qcm	PhD	School of Public Health	University of Queensland Brisbane Queensland Australia		Queensland Centre for Mental Health Research Brisbane Queensland Australia	Institute fo University (Seattle Washington United_States)	
Dr.	Florian			Fischer	f.fischer@uni-biele	PhD	School of Public Health	Bielefeld University Bielefeld North Rhin Germany				
Mr.	Tsegaye			Gebrehwot	tsegaye.tewelde@	MPH	Division of Human Nutrition	Jimma University Jimma Oromia Ethiopia				
Dr.	Johanna	M.		Geleijnse	marianne.geleijnse	PhD	Wageningen University	Wageningen Netherlands				
Prof.	Philimon			Gona	philgona@gmail.co	PhD	University of Massachusetts Boston	Boston Massachusetts United_States				
Prof.	Harish			Gugnani	harish.gugnani@gn	PhD	Department of Microbiology and Epidemiology & Biostatistics	Saint James School of Medicine The Quarter Anguilla				
Dr.	Rajeev			Gupta	rajeevg@gmail.co	PhD	Institute	Jaipur Rajasthan India				
Prof.	Randah			Hamadeh	randah@agu.edu.b	PhD	Arabian Gulf Centre and Research Institute	Manama Bahrain				
Dr.	Samer			Hamidi	s.hamidi@hbmsu.a	DrPH	Hamdan Bin Mohammed Smart University	Dubai United_arab_emirates				
Dr.	Josep Maria			Haro	27652jha@comb.c	MD	Parc Sanitari Sant Joan de Déu - CIBERSAM	Sant Boi de Llobregat (Spain				
Prof.	Roderick	J		Hay	roderick.hay@fd.o	DM	International Foundation for Dermatology	London United_Kingdom		King's College London London United_Kingdom		
Mr.	Stephen			Hearps	stephen.hearps@n	PGDipBiosci	Murdoch Childrens Research Hospital	Parkeville VIC Australia				
Ms.	Delia			Hendrie	d.v.hendrie@curtir	MA	Centre for Population Health Research	Curtin University Bertley WA Australia				
Dr.	Peter	J		Hotze	hotze@bcm.edu	PhD	College of Medicine	Baylor University Houston Texas United_States				
Dr.	Guoqing			Hu	huguogqing009@gr	PhD	Department of Epidemiology and Health Statistics, School of Public Health	Central South University Changsha Hunan China				
Prof.	Jost	B		Jonas	Jost.Jonas@medm	PhD	Department of Ophthalmology, Medical Faculty Mannheim	Ruprecht-Karls-University Heidelberg Mannheim Germany				

Dr.	André Seyed Amir Mr.	M.	Karch Karimi Kasaean Kebede	andre.karch@helm MD skarimi2@uw.edu PhD amir_kasaean@ya seifu.kebede@mu.	Epidemiological and Statistical Methods Research Group Hematology-Oncology and Stem Cell Transplantation Research Center	Helmholtz Centre for Infection Research University of Washington Tacoma Tehran University of Medical Sciences Mekelle University	Braunschweig Tacoma WA Mekele Tehran Trigray	Germany United_States Iran Ethiopia	Hannover-German Endocrinol Tehran University of Medical Sciences	Research Braunschweig Tehran Tehran	Germany Iran
Dr.	Andre Ejaz	Pascal Ahmad	Kengne Khan	andre.kengne@mn PhD ejaz@hsa.edu.pk MD		South African Medical Research Council Health Services Academy Iranian Ministry of Health and Medical Education	Cape Town Western C Islamabad Punjab	South_Africa Pakistan	University of Cape Town	Cape Town Western C	South_Africa
Dr.	Ardeshir Jagdish		Khosravi Khubchandani	ardeshir.khosravi@PhD jkhubchandani@bsi PhD	Department of Nutrition and Health Science	Ball State University	Tehran Muncie Indiana	Iran United_States	Non-Comm Tehran University of Medical Sciences	Tehran	Iran
Dr.	Yoshihiro Jacek	A	Kokubo Kopec	ykokubo@hsp.ncvc PhD jkopec@arthritisree:PhD	Department of Preventive Cardiology	National Cerebral and Cardiovascular Center University of British Columbia	Suita Vancouver BC	Osaka Canada			Japan
Dr.	Soewarta		Kosen	soewarta.kosen7@ MD	Center for Community Empowerment	Health Policy and Humanities, National Institute of Health Research & Development London School of Hygiene & Tropical Medicine	Jakarta	Daerah Kht Indonesia			
Prof.	Heidi Anders Janet	J. L	Larson Leasher	Heidi.Larson@lchr: PhD anders.larsson@ok PhD leasher@nova.edu OD	Department of Infectious Disease Epidemiology Department of Medical Sciences College of Optometry	Uppsala University Nova Southeastern University	London Uppsala Fort Lauderdale	United_Kin Sweden United_States	Institute fo University of Washington	Seattle WA	United_States
Dr.	Janni Yongmei Paulo	A.	Leung Li Lotufo	j.leung1@uq.edu.a PhD yongmei@hotmail PhD palotuf@usp.br DrPH	School of Public Health	San Francisco VA Medical Center University of São Paulo Aintree University Hospital National Health Service Foundation Trust Mansoura Faculty of Medicine	Brisbane QLD San Francisco California São Paulo	United_States Brazil	University of Washington	Seattle WA	United_States
Prof.	Raimundas Hassan		Lunevicius Magdy Abd El Razek	rlunevicius@yahoo: PhD farreha2013@hotnMB8CH	Knowledge Utilization Research Center and Community Based Participatory Research Center	Mansoura Faculty of Medicine	Liverpool Mansoura	United_Kin Egypt	School of N University of Liverpool	Liverpool	United_Kingdom
Prof.	Reza Azeem Peter Ziad Walter Francis	A.	Majdzadeh Majeed Memiah Mendoza Mhimbira	rezamajd@tums.ac PhD a.majeed@imperia MD pmemiah@uwf.edu PhD zmemiah@yahoo.c MD mendoza@unfpa.o MD mhimbira@gmail.i MS	Department of Primary Care & Public Health	Imperial College London University of West Florida Saudi Ministry of Health United Nations Population Fund Ifakara Health Institute	Tehran London England Riyadh Lima Bagamoyo	Iran United_Kingdom United_States Saudi_Arab Peru Coast Regi Tanzania	College of I AlFaisal University	Riyadh	Saudi_Arabia
Dr.	Ted Phillip	R B.	Miller Mitchell	miller@pire.org PhD phil.mitchell@unsv MD		Pacific Institute for Research & Evaluation University of New South Wales Institute for Maternal and Child Health, IRCCS "Burlo Garofolo" American University of Beirut	Calverton MD Kensington New South Australia	United_Sta Centre for Curtin University		Perth WA	Australia
Dr.	Lorenzo Carla		Monasta Obermeyer	lorenzo.monasta@ DSc cm39@aub.edu.lb DSc	Center for Research on Population and Health, Faculty of Health Science: Department of Preventive Medicine, School of Medicine	Trieste Beirut Seoul Lagos Madrid Busan	TS Italy Lebanon South_Korea Nigeria Spain South_Korea				
Prof.	In-Hwan Alberto Eun-Kee		Oh Oluksanya Orit Park	parenchymed@gmail PhD boolsamaya@aol.cc PhD aortiz@fides PhD bioremediation@h PhD	Department of Medical Humanities and Social Medicine, College of Medicine	Kyung Hee University Center for Healthy Start Initiative IIS-Fundacion Jimenez Diaz-UAM Kosin University	Seoul Lagos Madrid Busan	South_Korea Spain South_Korea			
Mr.	Matti		Parry		MD	World Health Organization	Geneva	Switzerland			
Prof.	David	M	Pereira	david.flup@gmail.c PhD		Universidade do Porto Shanghai Jiao Tong University School of Medicine	Porto	Portugal			
Prof.	Michael Farshad Mostafa Amir	Robert	Phillips Pourmalek Qorbani Radfar	mphilipscchina@ou MD farshad.pourmalek PhD qorbani PhD aradfar@atsu.edu MD	Non-communicable Diseases Research Center	University of British Columbia Alborz University of Medical Sciences A T Still University	Shanghai Vancouver British Colu Iran Kirksville MO	China Canada United_States	Emory University	Atlanta Georgia	United_States
Dr.	Anwar Vafa		Rafay Rahimi-Movaghar	rafay.aku.epibio@tMS v_rahimi@tums.ac MD	Sina Trauma and Surgery Research Center	Contech International Health Consultants Tehran University of Medical Sciences Society for Health and Demographic Surveillance	Lahore Tehran	Pakistan Pakistan	Contech School of Public Health	Lahore Punjab	Pakistan
Mr.	Rajesh Kumar Saleem	M	Rai Rana	rajesh.rips28@gmail MPH smrmep@gmail.co PhD		Contech School of Public Health	Suri Lahore	West Beng India Pakistan			
Dr.	David Salman	Laith	Rawaf Reavley	drawaf@ic.ac.uk MD, MBBS WHO Collaborating Centre s.rawaf@imperial.a MD nreavley@unimeib PhD	Melbourne School of Population and Global Health	Imperial College London The University of Melbourne	London Melbourne VIC	United_Kingdom Australia	North Hampshire Hospitals	Basingstroke	United_Kingdom University (London) United_Kingdom
Prof.	Andre	M.N.	Renzaho	andre.renzaho@wi PhD		Western Sydney University	Locked Bag NSW	Australia			
Dr.	Satar		Rezaei	satar.rezaei@kums PhD	School of Public Health	Kermanshah University of Medical Sciences	Kermanshah	Iran			
Dr.	Mohammad Sadegh Diego		Rezal Rios-Zertuche	dmsrezaei@yahoo MD diegori@iadb.org MPA	Infectious Diseases Research Centre with Focus on Nosocomial Infection	Mazandaran University of Medical Sciences Salud Mesoamerica 2015 Initiative	Sari Panama	Mazandara Iran Panama			
Dr.	Gholamreza Dietrich		Roshandel Rothenbacher	roshandel_md@ya PhD dietrich.rothenbad MD	Golestan Research Center of Gastroenterology and Hepatology Institute of Epidemiology and Medical Biometry	Golestan University of Medical Sciences Ulm University	Gorgan Ulm	Iran Germany	Digestive D Tehran University of Medical Sciences	Tehran	Iran
Dr.	Mahdi		Safdarian	mahdisafdarian@ig MD		Sina Trauma & Surgery Research Center Shahid Beheshti University of Medical Sciences	Tehran	Iran			
Ms.	Sare		Safi	sare.safi@yahoo.cc MS	Ophthalmic Epidemiology Research Center Managerial Epidemiology Research Center, Department of Public Health, School of Nursing and Midwifery		Tehran	Iran			
Dr.	Saeid Mohammad Ali		Safiri Sahraini	saeidsafiri@gmail.c PhD sahraini350@yah MD	MS Research Center, Neuroscience Institute	Maragheh University of Medical Sciences Tehran University of Medical Sciences	Maragheh Tehran	Iran Iran			
Prof.	Abdallah Juan	M. Ramon	Salamati Sanabria	asalamati@tums.ac MD azamy.ku@tulhigh PhD Juan.Sanabria@cas MD	Sina Trauma and Surgery Research Center J Edwards School of Medicine	Ain Shams University Marshall University	Cairo Tehran Huntington WV	Egypt United_States	Lawrence Case Western Reserve University	Kansas Cleveland OH	United_States United_States
Dr.	Damian Benn David Soraya Sadaf Tesfaye Amira Masood		Santomauro Sartorius Schwebel Seadat Sapanlou Setegn Shaheen Shaikh	damians@uw.edu PhD sartorius@ukzn.ac PhD schwebel@uab.edu PhD sseadat@sun.ac.za PhD sapanlou@yahoo.c PhD tesfayese@yale MPH shaheenamira@yah PhD masoodalishaiikh@ MD	School of Public Health Public Health Medicine, School of Nursing and Public Health	University of Queensland University of KwaZulu-Natal University of Alabama at Birmingham Stellenbosch University Tehran University of Medical Sciences Bahir Dar University An-Najah National University Independent Consultant	Brisbane Durban Birmingham Alabama Cape Town Tehran Bahir Dar Nabuln Karachi	Queenslan Australia South_Afri UKZN South_Africa Iran Amhara Re Palestine	Queensland Centre for Mental Health Research Brisbane	Queenslan Australia South_Africa	Institute fo University ; Seattle Washington United_States
Dr.	Rahman Inga	Dora	Shiri Sigfusdottir	rahman.shiri@ttl.fi PhD ingadora@ru.is PhD	Finnish Institute of Occupational Health, Work Organizations, Work Disability Program, Department of Public Health, Faculty of Medicine	University of Helsinki Reykjavik University	Helsinki Reykjavik	Finland Iceland			

